



PRESERVATIONWORKS

KIRKBRIDE ON KIRKBRIDES:

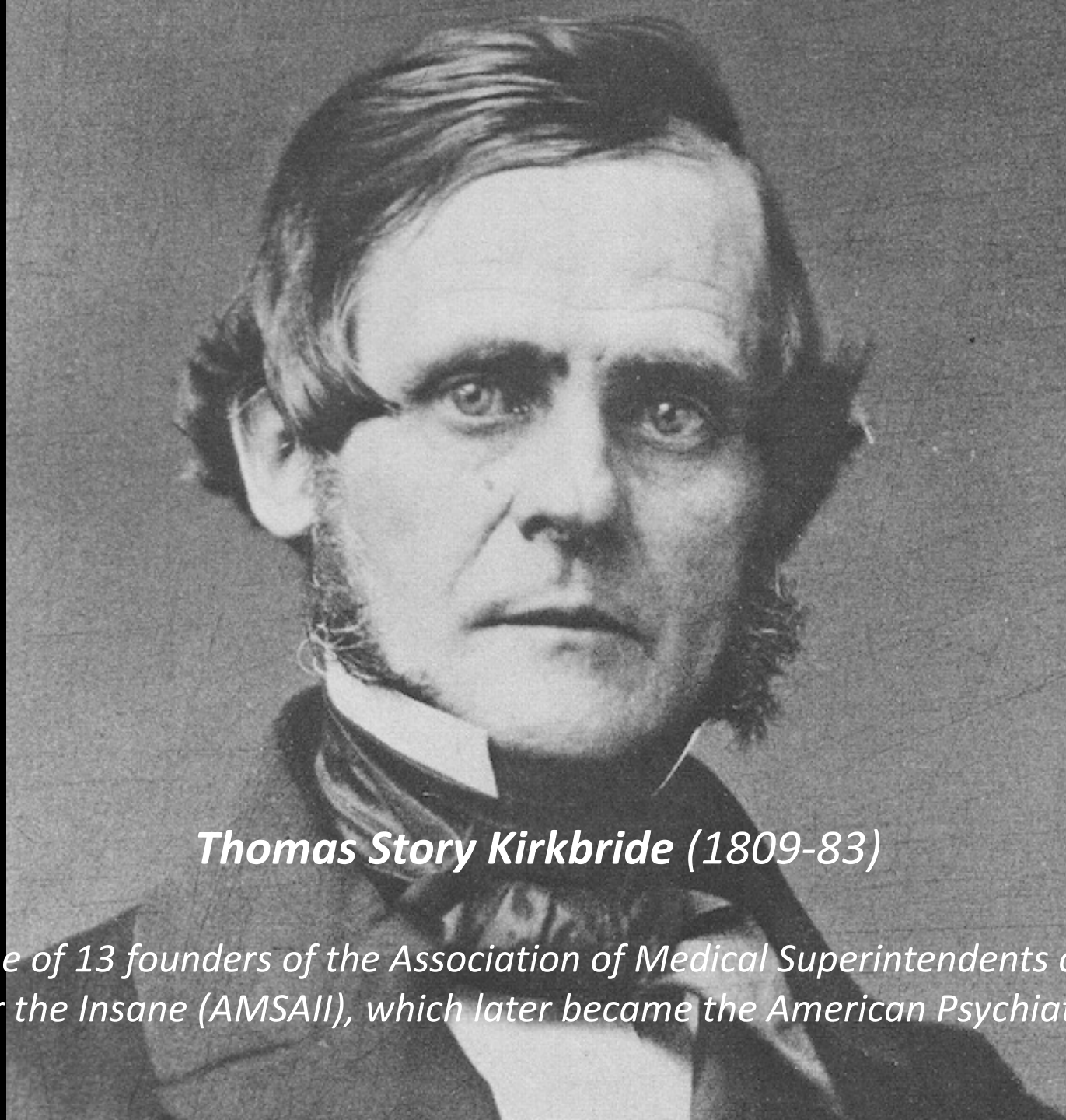
**A LECTURE AND BOOK SIGNING WITH
DR. ROBERT KIRKBRIDE**

**SEPTEMBER 23RD. 3PM. BURCHFIELD PENNEY ART
CENTER AUDITORIUM.**



Co-sponsored by The Lipsey
Architecture Center Buffalo and
PreservationWorks





Thomas Story Kirkbride (1809-83)

In 1844, one of 13 founders of the Association of Medical Superintendents of American Institutions for the Insane (AMSAI), which later became the American Psychiatric Association

ORIGINS
PHANTOMS
AFTERLIVES

A photograph of two tall, historic stone towers of the Buffalo State Hospital at night. The towers are illuminated with vibrant, multi-colored lights in shades of red, orange, yellow, green, and blue, creating a rainbow effect. The sky is dark, and some foliage is visible in the foreground and to the left.

Buffalo State Hospital
Adaptive Reuse design by TenBerke Associates



The Kirkbride Navigator

<http://thepreservationworks.org>

ORIGINS



Photo: Encyclopaedia Britannica/ UIG VI

“We are not sent into this world mainly to enjoy the loveliness therein, nor to sit us down in passive ease; no, **WE WERE SENT HERE FOR ACTION.**”

—DOROTHEA DIX



Greystone Park Psychiatric Hospital, 1876

WHAT IS A KIRKBRIDE?



Edinburgh

Greenock

Glasgow

Paisley

Kilbarnock

Ayr

Dumfries

Hadrian's Wall

Kirkbride

Newcastle upon Tyne

Sunderland

Durham

Middlesbrough

North Pennines AONB

Lake District National Park

North York Moors National Park

Isle of Man

Google

Belfast

Lisburn

Lymena



What if Quakerism had never happened?

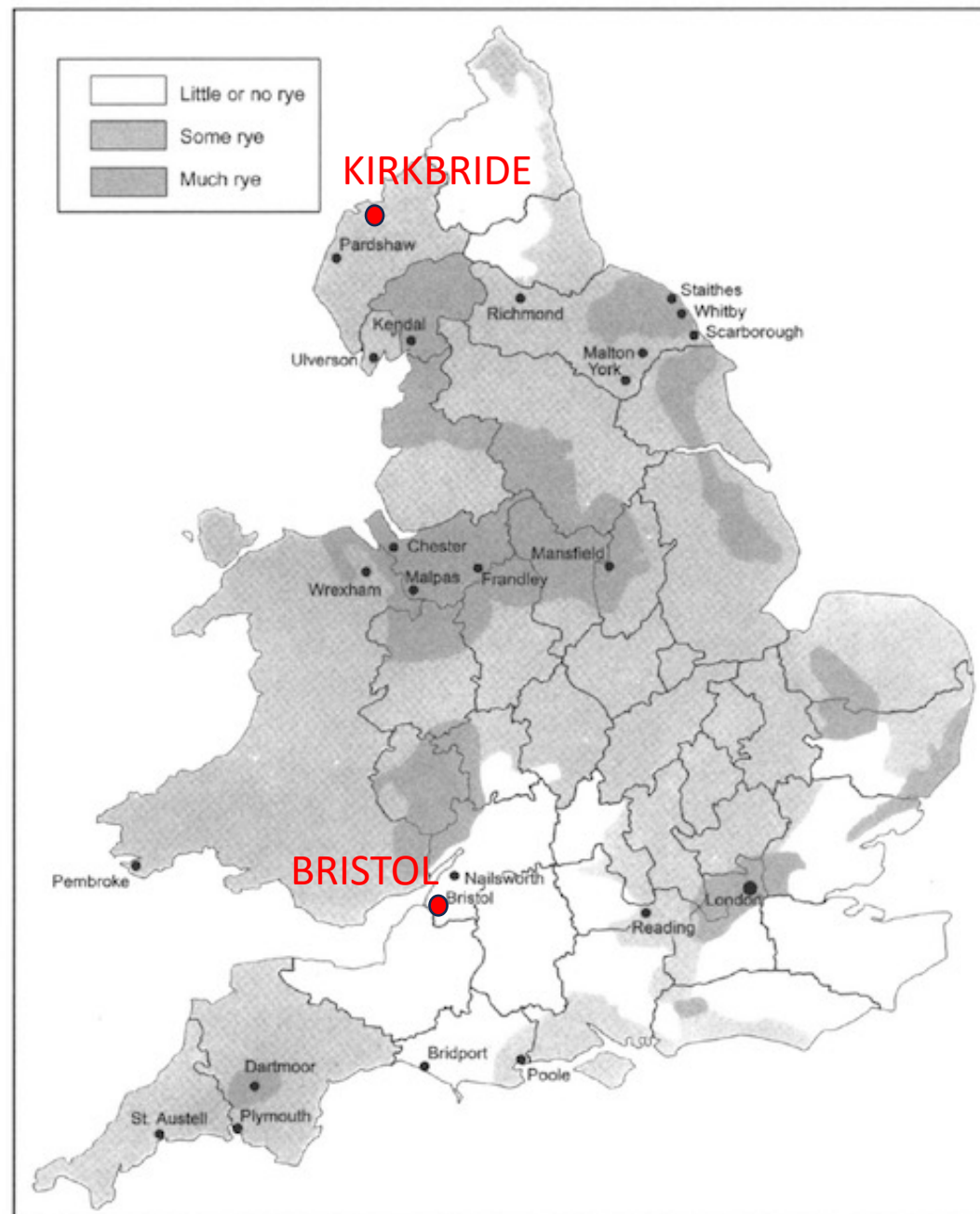
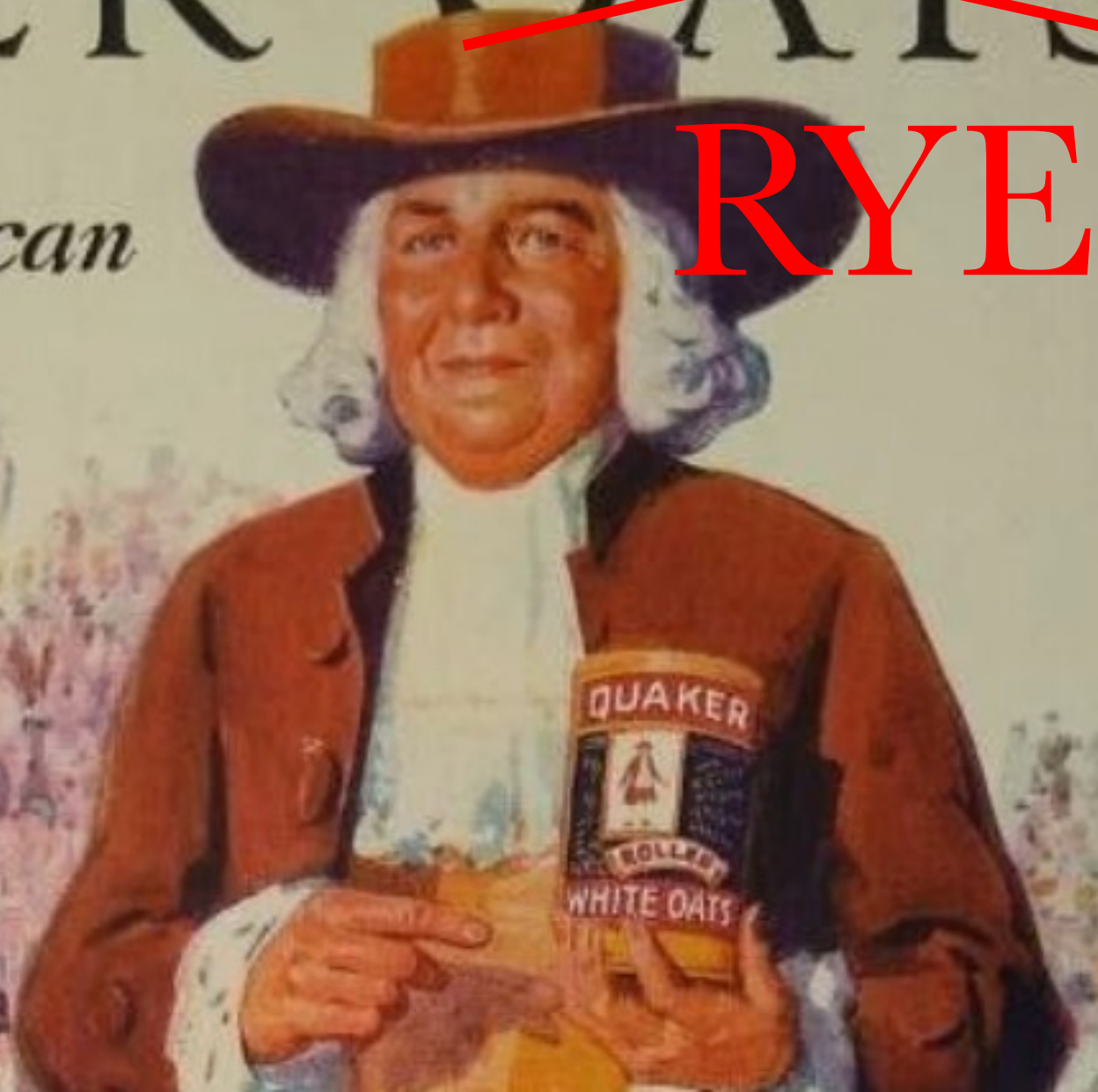


Chart 1. Distribution of rye cultivation in England and Wales, c. 1650, showing towns which were Quaker centers.

QUAKER OATS

*The Great American
Breakfast*

RYE





From the jacket / Historic Archives, Institute of the Pennsylvania Hospital

An 1860 view of the Male Department of the Pennsylvania Hospital for the Insane

A giant in caring for the mentally ill

Reviewed by
Gerald N. Grob

Since World War II, American society has been moving away from institutional care of the mentally ill. Mental hospitals, once regarded as harbingers of progress, are now perceived as inhumane snake pits that merit extinction. Indeed, a number of recent scholars, including David J. Rothman, Michael B. Katz and Andrew Scull, have insisted that institutional care of the mentally ill was an unmitigated disaster from its very beginning in the

A GENEROUS CONFIDENCE
Thomas Story Kirkbride and the
Art of Asylum-Keeping, 1840-1883
Nancy Tomes
Cambridge University Press. 387 pp. \$39.50

century and, from 1840 to 1883, head of the Pennsylvania Hospital for the Insane, then a part of the Pennsylvania Hospital and now called the Institute of the Pennsylvania Medical



From the book / Historic Archives, Institute of the Pennsylvania Hospital

Thomas Story Kirkbride shaped U.S. institutional psychiatry for half a century

social, cultural and medical elements. In his eyes, insanity was a curable disease that did not differ from physical disease. A proponent of "moral" (i.e. psychological) therapy, he insisted that treatment in small hospitals, preferably limited to 250 patients, was far superior to community care. In this sense, he dealt with the frustrations of families of the mentally ill and with their fears of institutional confinement. To put it another way, moral treatment involved a process of personal redemption. For

an important addition to the history of the care and treatment of the mentally ill. In the first place, the book is based on deep research into printed and unpublished archival records. The same cannot be said for a number of other works, which represent ideological rather than historical claims.

Furthermore, her book is sympathetic and yet critical. The most innovative part is the effort to reconstruct the family setting from which insane people were sent to hospitals.



Greenock

Edinburgh

Glasgow

Paisley

Kilmarnock

Ayr

Hadrian's Wall

Dumfries

Kirkbride

Hedley-on-the-Hill

Newcastle upon Tyne

Sunderland

Durham

Middlesbrough

North Pennines AONB

Lake District National Park

North York Moors National Park

Isle of Man

Google

Belfast

Lisburn

Lymington

PHILADELPHIA STATE HOSPITAL
Roosevelt Boulevard & Southampton Road
Philadelphia, Pa., 19114

COMMONWEALTH OF PENNSYLVANIA DEPARTMENT OF PUBLIC WELFARE

CENTRAL UNIT
C-1, C-2, C-3, C-4, C-5

SOUTH UNIT
C-8, C-9, C-10, C-11
S-3 (B.S.C.R.C.)

EAST UNIT
W-6

WEST UNIT
N-9, W-7

NORTH UNIT
N-8

JEFFERSON UNIT
W-3 (East Wing)

MED/SURG UNIT - N-10

RESEARCH & EDUCATION
W-3 (West Wing)
S-3

PHARMACY
N-10, C-14, W-6

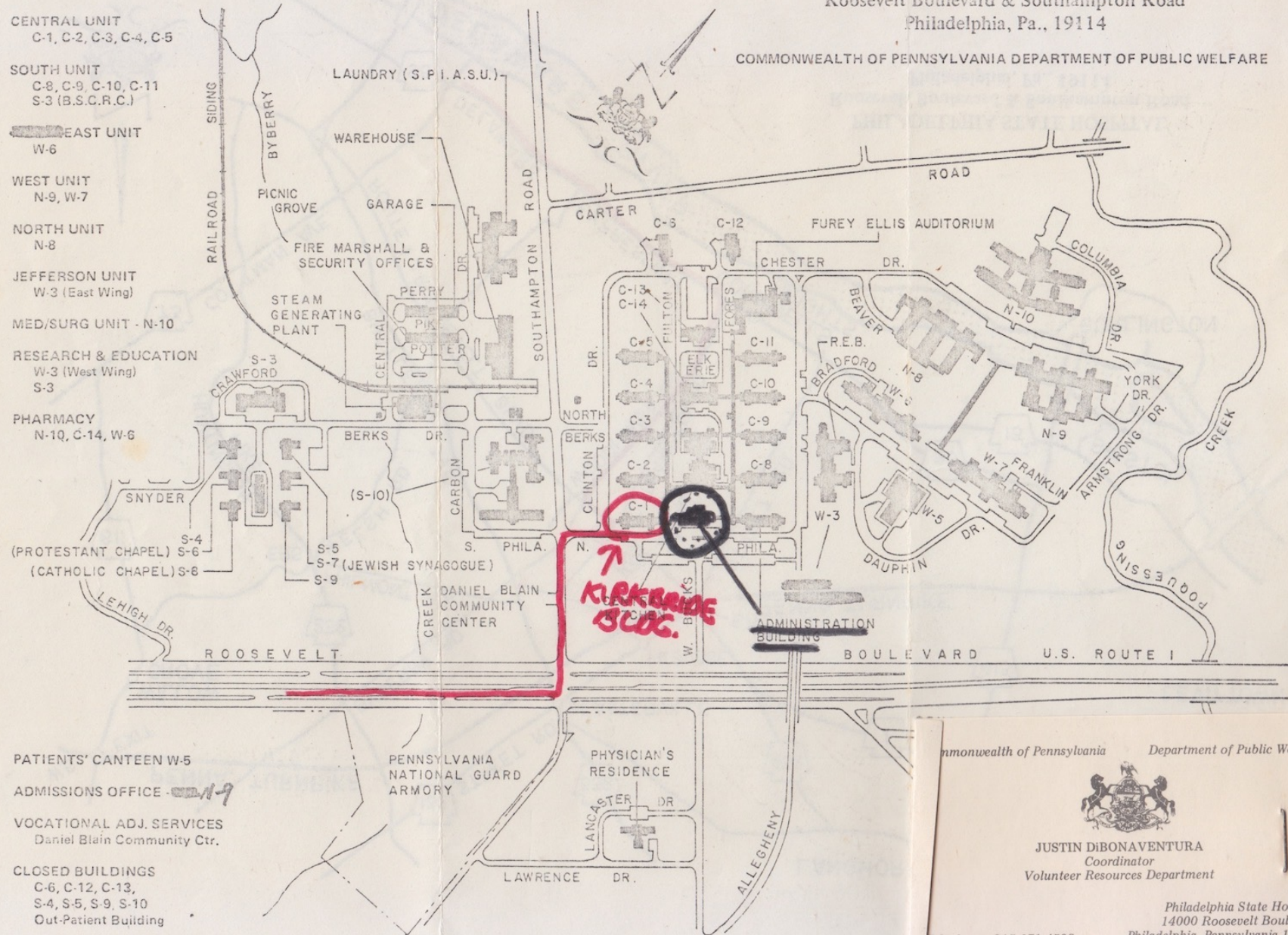
SNYDER
(PROTESTANT CHAPEL) S-6
(CATHOLIC CHAPEL) S-8

PATIENTS' CANTEN W-5

ADMISSIONS OFFICE - 119

VOCATIONAL ADJ. SERVICES
Daniel Blain Community Ctr.

CLOSED BUILDINGS
C-6, C-12, C-13,
S-4, S-5, S-9, S-10
Out-Patient Building



Commonwealth of Pennsylvania Department of Public Welfare



JUSTIN DIBONAVENTURA
Coordinator
Volunteer Resources Department

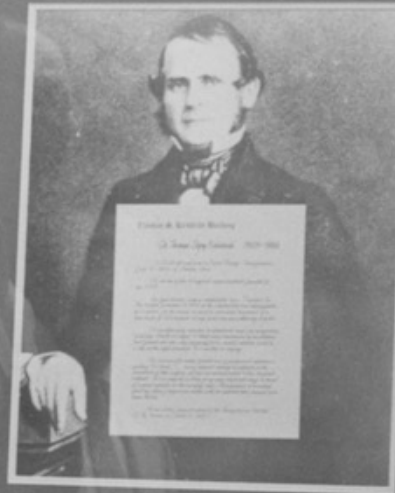
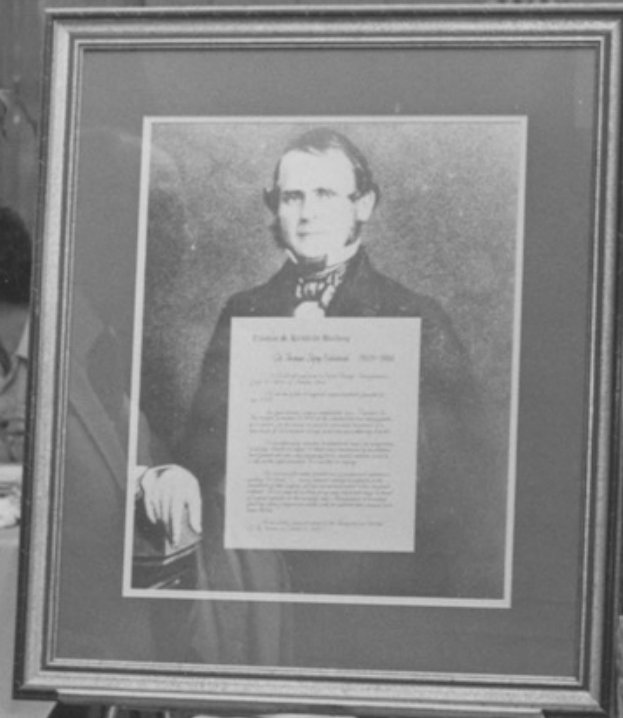
Philadelphia State Hospital
14000 Roosevelt Boulevard
Philadelphia, Pennsylvania 19114
Telephone: 215-671-4508

Beatrice Hedley Kirkbride

(1907-2004)

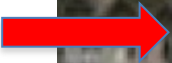


EXIT

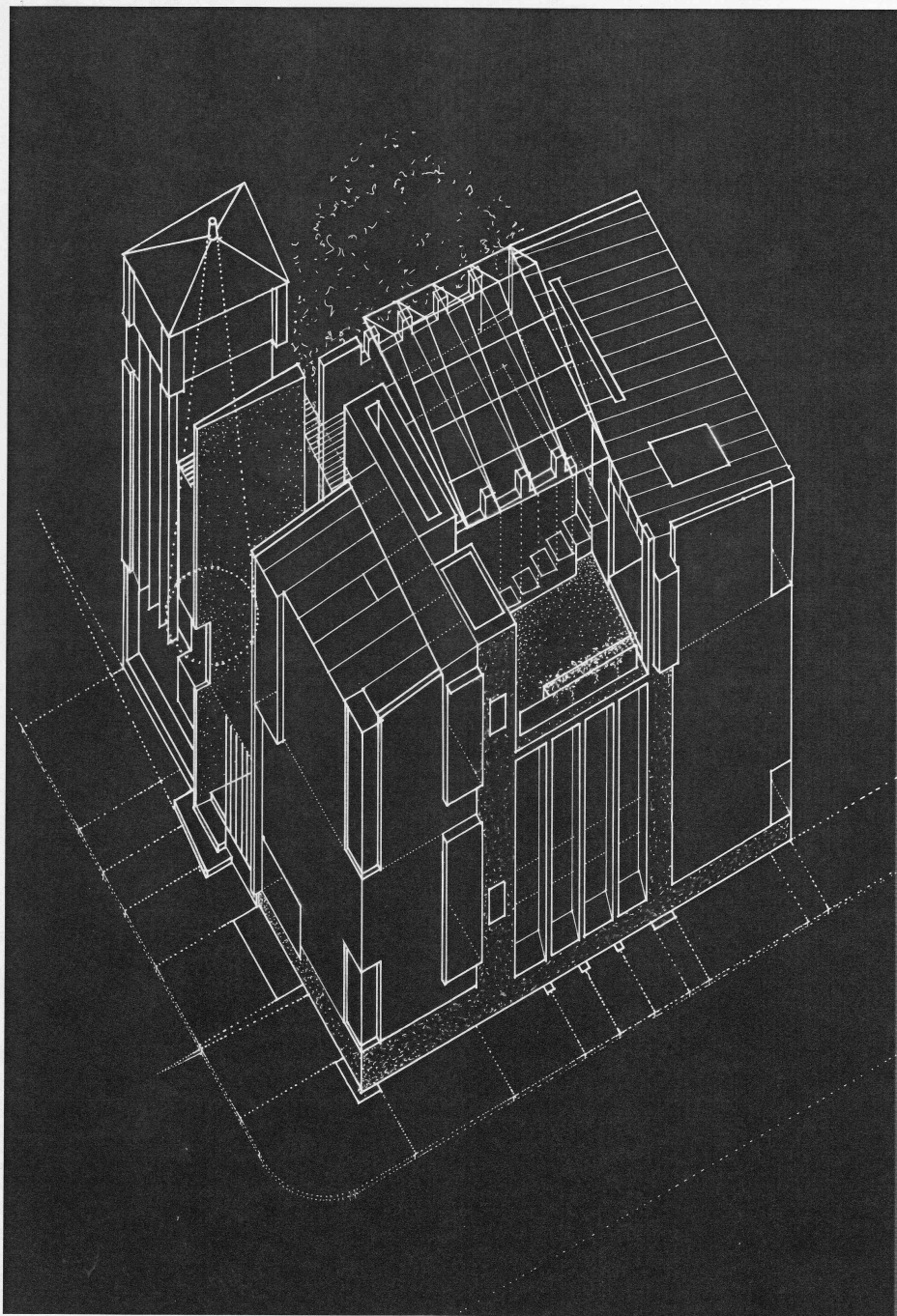




The Curiosity Shop



Eastern State Penitentiary, Philadelphia, John Haviland (1829)



Left: *The Curiosity Shop*, Robert Kirkbride
MArch Thesis (1990)

The Philadelphia Art Alliance Presents
JULY 14 - SEPTEMBER 10, 1995
Opening Reception: July 14, 5:30 - 7:30 p.m.
an
EXHIBITION
of

architectural CURIOSITIES

Featuring
full-scale architectural installations, and a tuesday
evening series of performances, films,
demonstrations, and other curious goings-on.

Tuesday Evening Events: July 25, August 8 & 22, 7 - 9 p.m.
Closing Reception: September 8, 7 - 9 p.m.

Gallery Hours: Tuesday - Sunday 11:00 am - 5:00 pm
The Philadelphia Art Alliance is situated near the Southeast
corner of Rittenhouse Square, at 251 South 18th Street.
For further information, Telephone #215.545.4302

LECTURE SERIES:
tuesday evenings 7:30 - 9 p.m.

robert e. kirkbride
"architectural curiosity:
a 'pataphysical study'"
"In a profession increasingly preoccupied with industrial actuality,
curiosity is a way by which an architect may play with the hardness
of 'facts' and reclaim the grounds to invest their work with care and
wonder."

marco frascari
"curiosity kills cats, not
architects"
"Curiosity is the origin of the care and elegance architects placed in
constructing and constructing their buildings."

frank fantauzzi
"ironic habits"
"A critical practice positioned outside contracted aspects of
architecture mandated by systems of law. A practice situated in the
reality of the building body and its cultural, political, and economic
context."

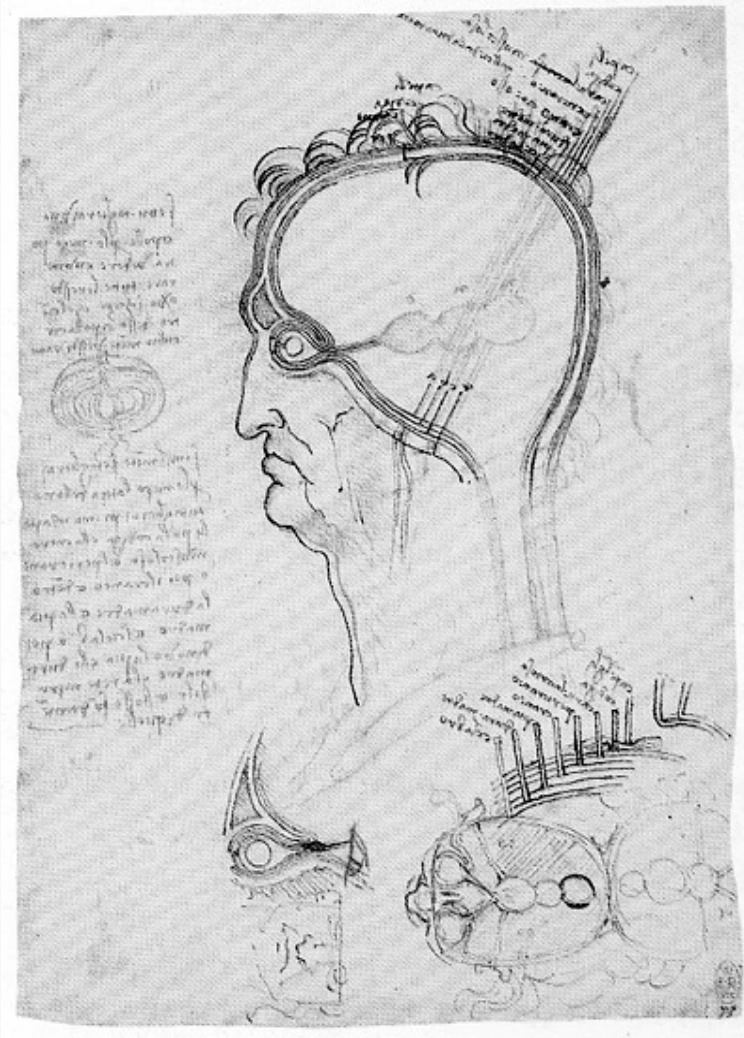
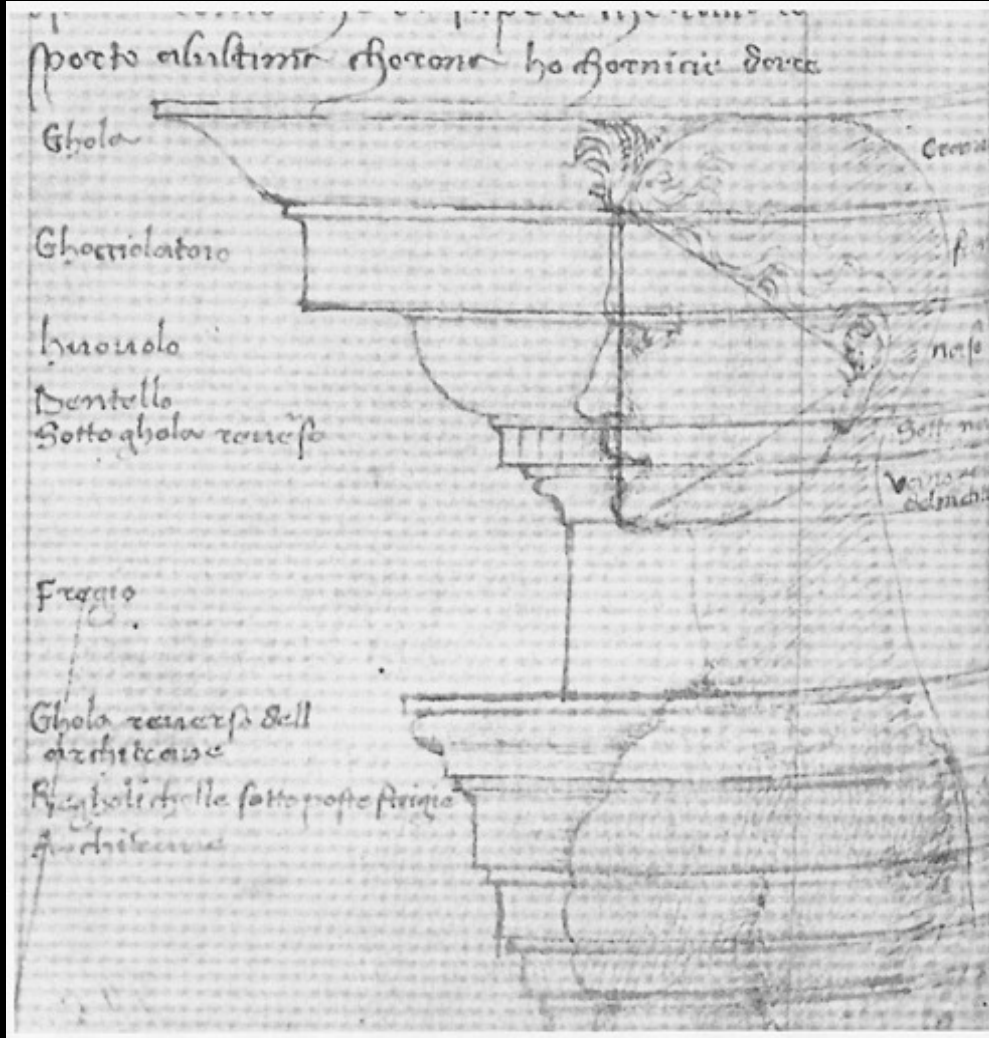
martha b. finney
"precarious balance: perpetuum
mobile"
"What is striking about all definitions of mobile is potential. It is as if
something were needed to come along to free action and balance
becomes not only a question of gravity but of direction - of
horizontal reach and vertical length. So too in architecture."

alex t. anderson
"sense and nonsense of curiosity"
"Searching for what is just beyond what we know or can know, our
curiosity discovers the wonders of the sub-urban world."

Sponsored by:
URBAN OUTFITTERS 1801 WALNUT ST. - 4040 LOCUST ST.
PRINTWAY PRINTING 2208 WALNUT ST.
Anthropologie 301 West Lancaster Ave., Wayne, PA
BORDERS BOOK SHOP Chertoff Hill

Above: *Architectural Curiosities*, Exhibition and
Lecture Series (1995)

Mind-Building



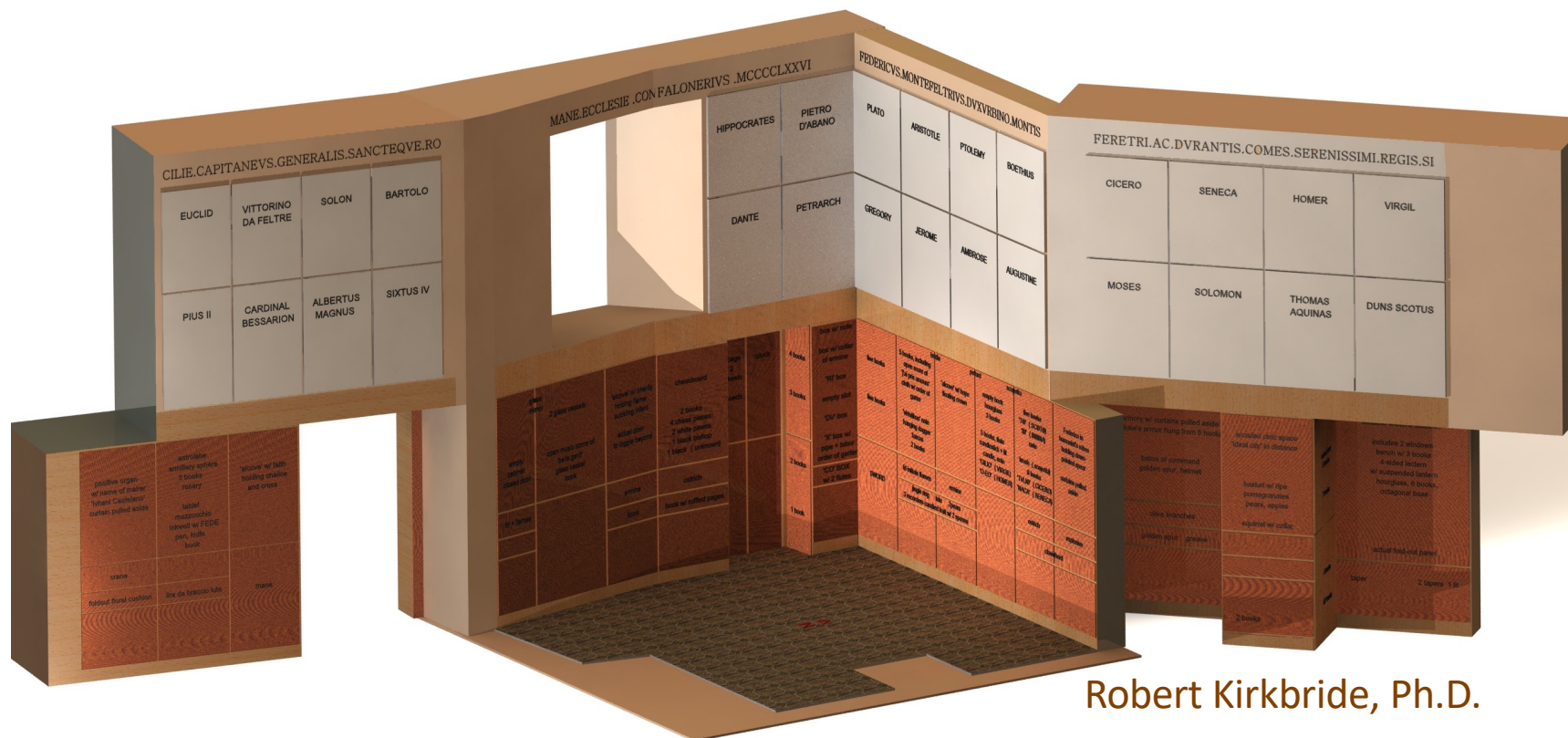
Left : External correspondences of body and ornament drawn by
Francesco di Giorgio Martini (1439-1502)

Right : Leonardo da Vinci's section through the human skull, speculating
on its inner chambers and workings



Architecture and Memory

the Renaissance studioli of Federico da Montefeltro



MORBID ANATOMY

MUSEUM

7 ST
3 AV
ONE WAY

SAMBA TRANSMISSION
& AUTO REPAIR
REBUILD TRANSMISSIONS
COMPLETE FOREIGN & DOMESTIC
TUNE UPS BRAKES SHOCKS AXLES ELECTRICAL WASH WAX POLISH OIL
NYS INSPECTION 718.797.2678





greystone park MEMORIAL

PreservationWorks Satellite Team

Robert Duffy, Lisa Marie Blohm, Jody Johnson Casale
Robert Kirkbride, Rusty Tagliareni



MEMORIAL PROPOSALS

Presented by the HRSH Memorial Committee

Yvonne Laube, Chair, Town Historic Preservation Commission

Robert Kirkbride, PhD, Historian and Architect

Francis Kowsky, Historian

William Harris, Deputy Director, FDR Presidential Library

Clifford Laube, Public Affairs Specialist, FDR Presidential Library

Shannon Butler, Town of Hyde Park Historian

Ann Shershin, Town of Poughkeepsie Board

Lynn Rightmyer, HRSH Alumni

Pat Toth, HRSH Alumni

Linda Hacksteiner, HRSH Alumni

Deborah Williams, HRSH Alumni

Susan Schopen, Social Worker

Elizabeth Fetherolf, Occupational Therapist

Bruce Rosenbaum, Sculptor

Joseph Galante, OMH Employee

Stephanie LaRose Lewison, Town Historic Preservation Commission

SO, WHAT IS A KIRKBRIDE?

***The best kind of hospitals —
not only best built, but with the most perfect
arrangements and fixtures of every kind,
and managed in the most liberal
and enlightened manner —
are sure to be most economical in the end.***

— Thomas Story Kirkbride, 1854



STATE HOSPITAL FOR THE INSANE FOR 250 PATIENTS.

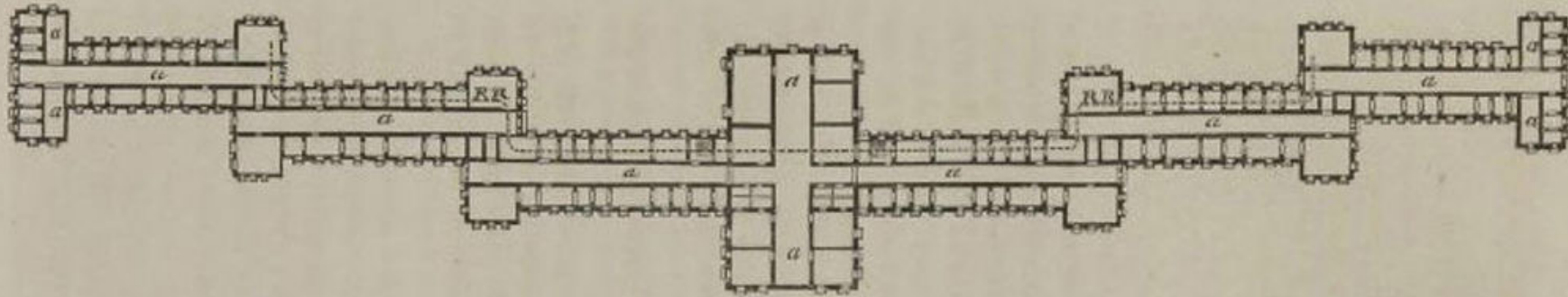
ON THE
CONSTRUCTION, ORGANIZATION,
AND
GENERAL ARRANGEMENTS

OF
HOSPITALS FOR THE INSANE.

BY
THOMAS S. KIRKBRIDE, M.D.,
PHYSICIAN TO THE PENNSYLVANIA HOSPITAL FOR THE INSANE.

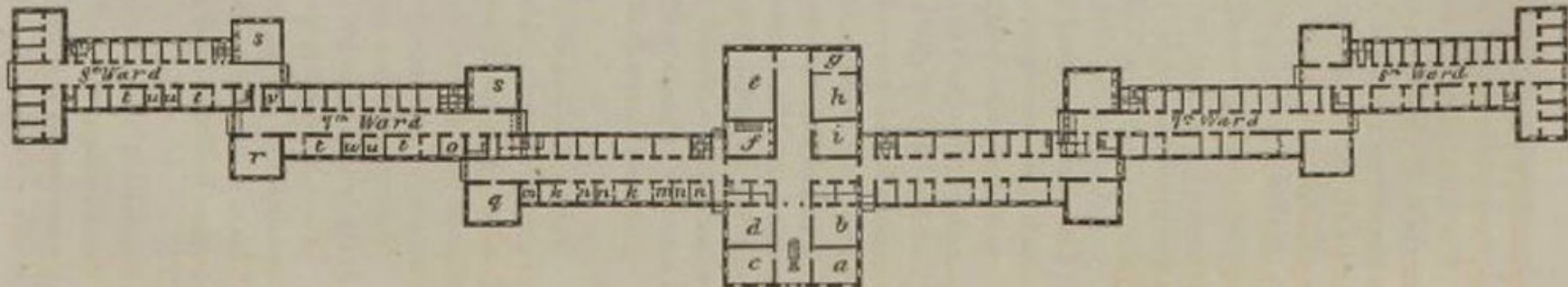
PHILADELPHIA:
LINDSAY & BLAKISTON.
1854.

No. 1.



PLAN OF CELLAR.

No. 2.

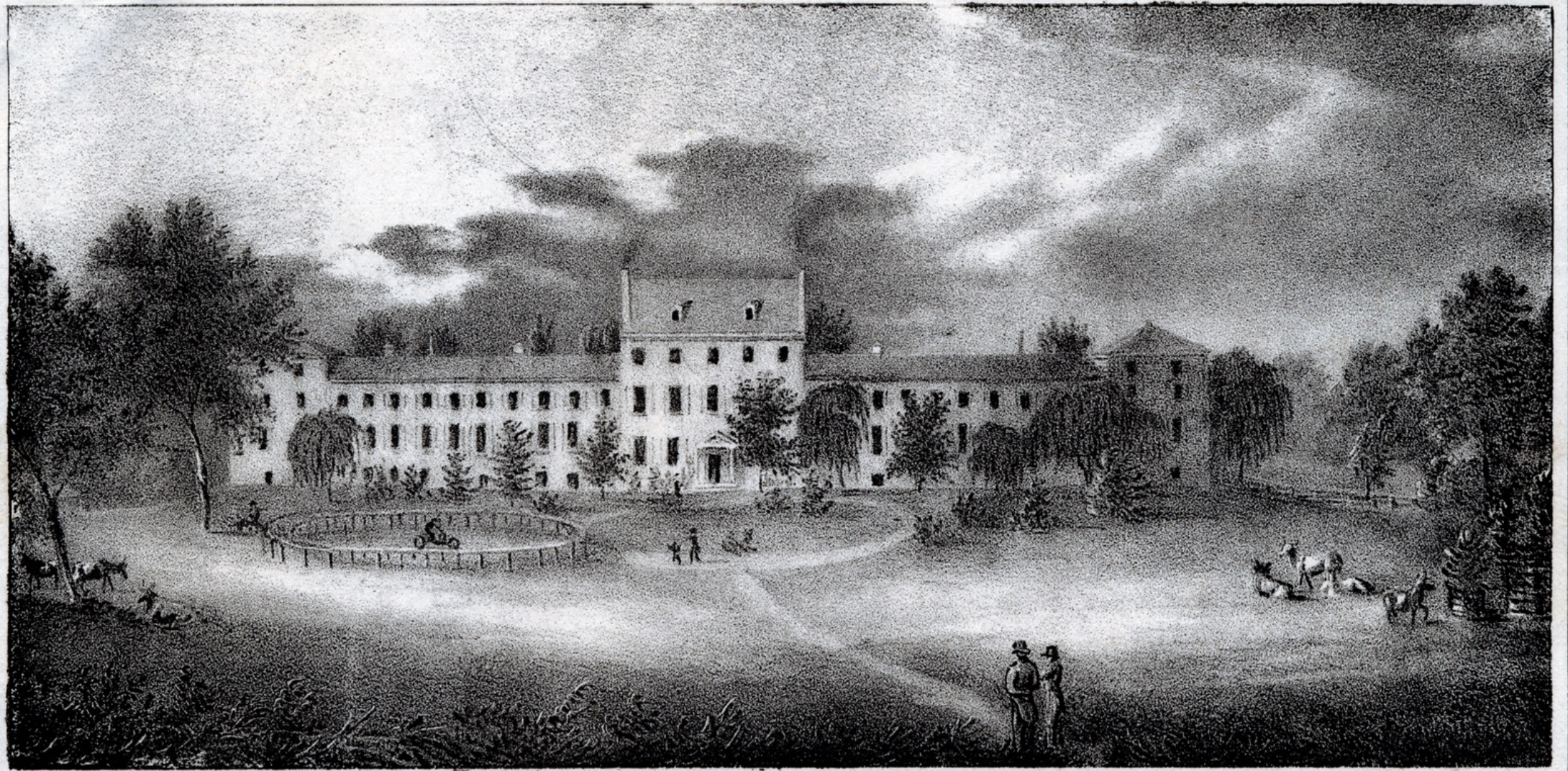


PLAN OF BASEMENT, OR FIRST STORY.

The Linear "Kirkbride" Plan: Tuscaloosa, AL (opened 1861)



STATE HOSPITAL FOR THE INSANE FOR 250 PATIENTS.



From Nature & on Stone by G. Lehman

Frankford Retreat, Philadelphia 1813

FRIENDS ASYLUM FOR THE INSANE

NEAR FRANKFORD.

Lehman & Duval Lith^{rs} Philad^a

50

York Retreat, England 1792

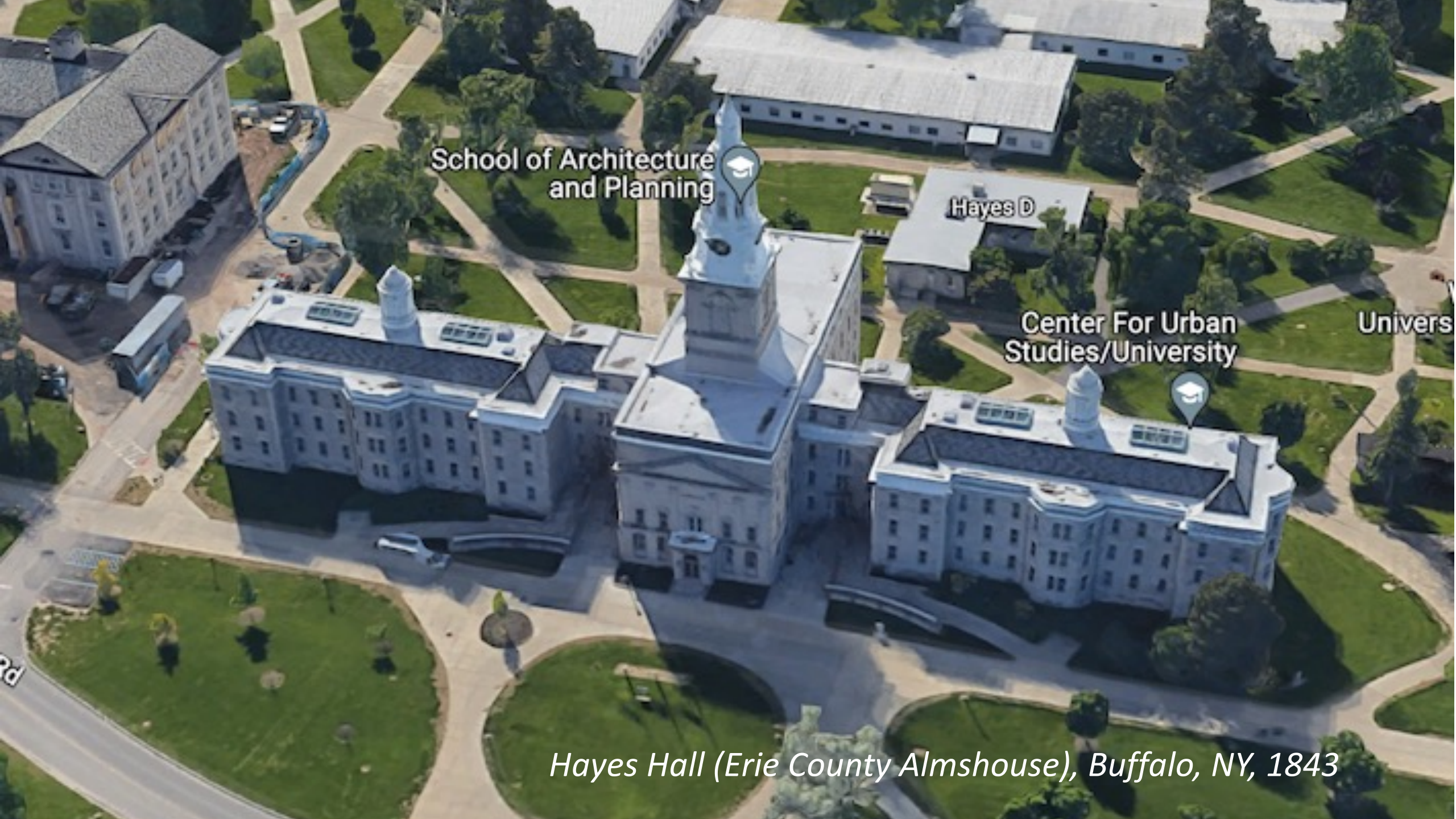


ORIGINAL BUILDING OF THE RETREAT, YORK. INSTITUTED 1792.

From a Painting by Cave.]



Utica State Hospital, Utica, NY, 1843



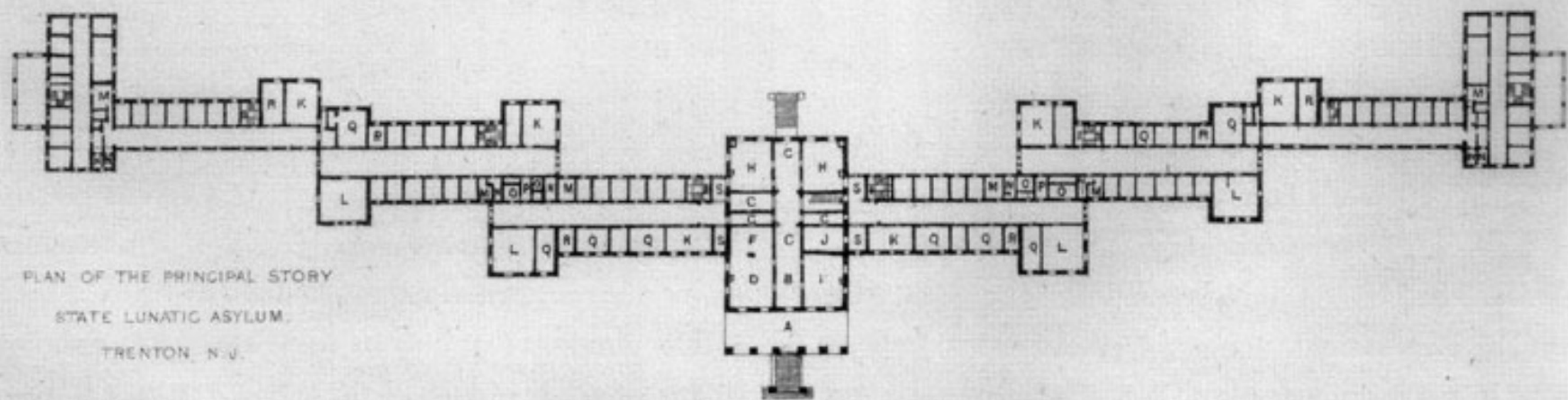
School of Architecture
and Planning

Hayes D

Center For Urban
Studies/University

Univers

Hayes Hall (Erie County Almshouse), Buffalo, NY, 1843

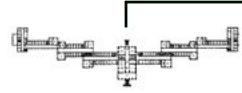


PLAN OF THE PRINCIPAL STORY
STATE LUNATIC ASYLUM.
TRENTON, N. J.

NEW JERSEY STATE LUNATIC ASYLUM.

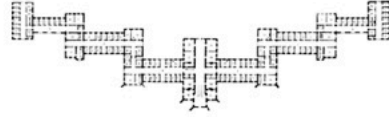
Trenton, NJ - 480ft

1848



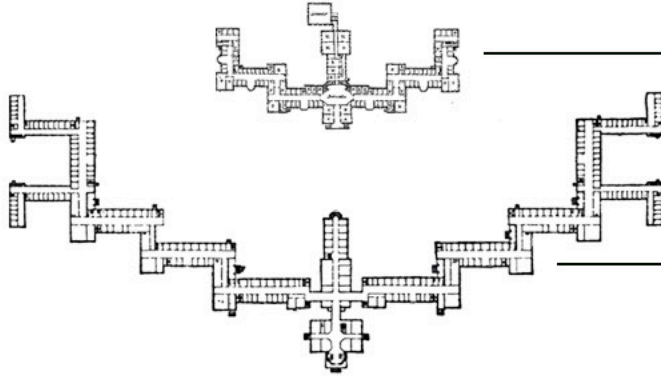
St. Elizabeths, D.C. - 750ft

1852



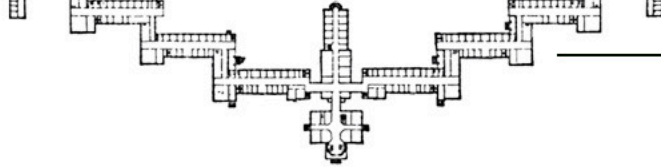
Northampton, MA - 519ft

1858



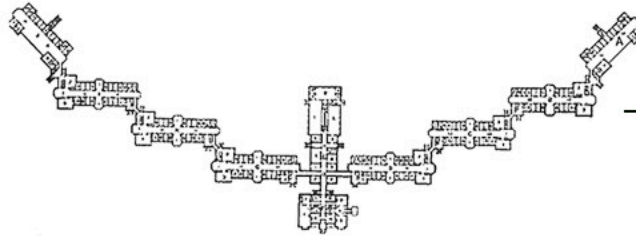
Greystone Park, NJ - 1,243ft

1876



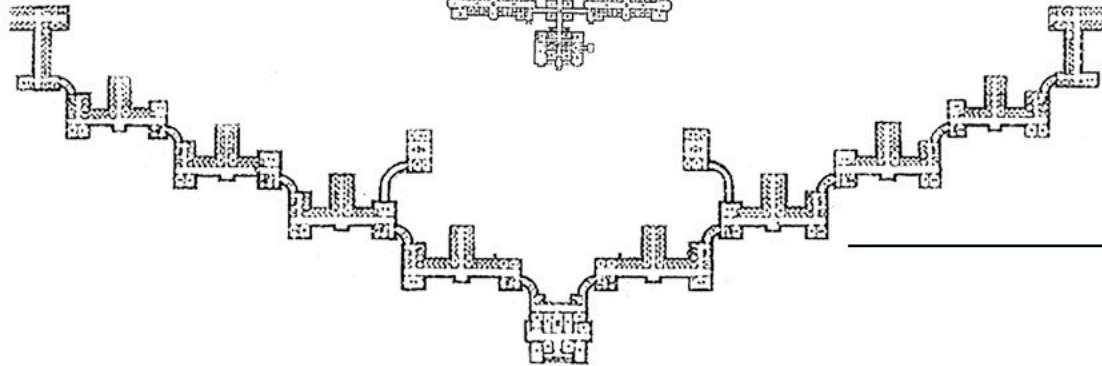
Danvers, MA - 1,100ft

1878



Buffalo, NY - 2,200ft

1880



PLAN
of the
PLEASURE GROUNDS AND FARM
OF THE
PENNSYLVANIA HOSPITAL FOR THE INSANE,
AT
Philadelphia.

LITH OF T. SINCLAIR, PHIL.

Scale 140 feet to an Inch.



REFERENCES.

1. Hospital Buildings
2. Physicians Residence
3. Green House
4. Range of Hot beds
5. Seed House and Sheds
6. Gate Keeper Lodge
7. Entrance to Enclosure
8. Work Shop and Yard
9. Tinpin Alley

10. Gentlemen's Private Yard
11. Ladies' " "
12. Flower border
13. Wash House
14. Pump Room
15. Pond, supplying Pump
16. Springs
17. Pleasure Rail Road
18. Gardener's Residence

19. Farmer's Residence
20. Coach house and stables
21. Barn
22. Sheds
23. Pigery
24. Wagon Sheds and Yard
25. Spring House
26. Ice House
27. Lot belonging to Hospital
28. Cottage

- Summer House
- Wall 10 1/2 ft high, surrounding 4 1/2 acres of Pleasure Ground
- a. a. a. Farm, 6 1/2 acres outside of inclosure
- Carriage Road
- Brick or Stone pavements
- Gravel or tan Walks
- Close Fence
- Pathways

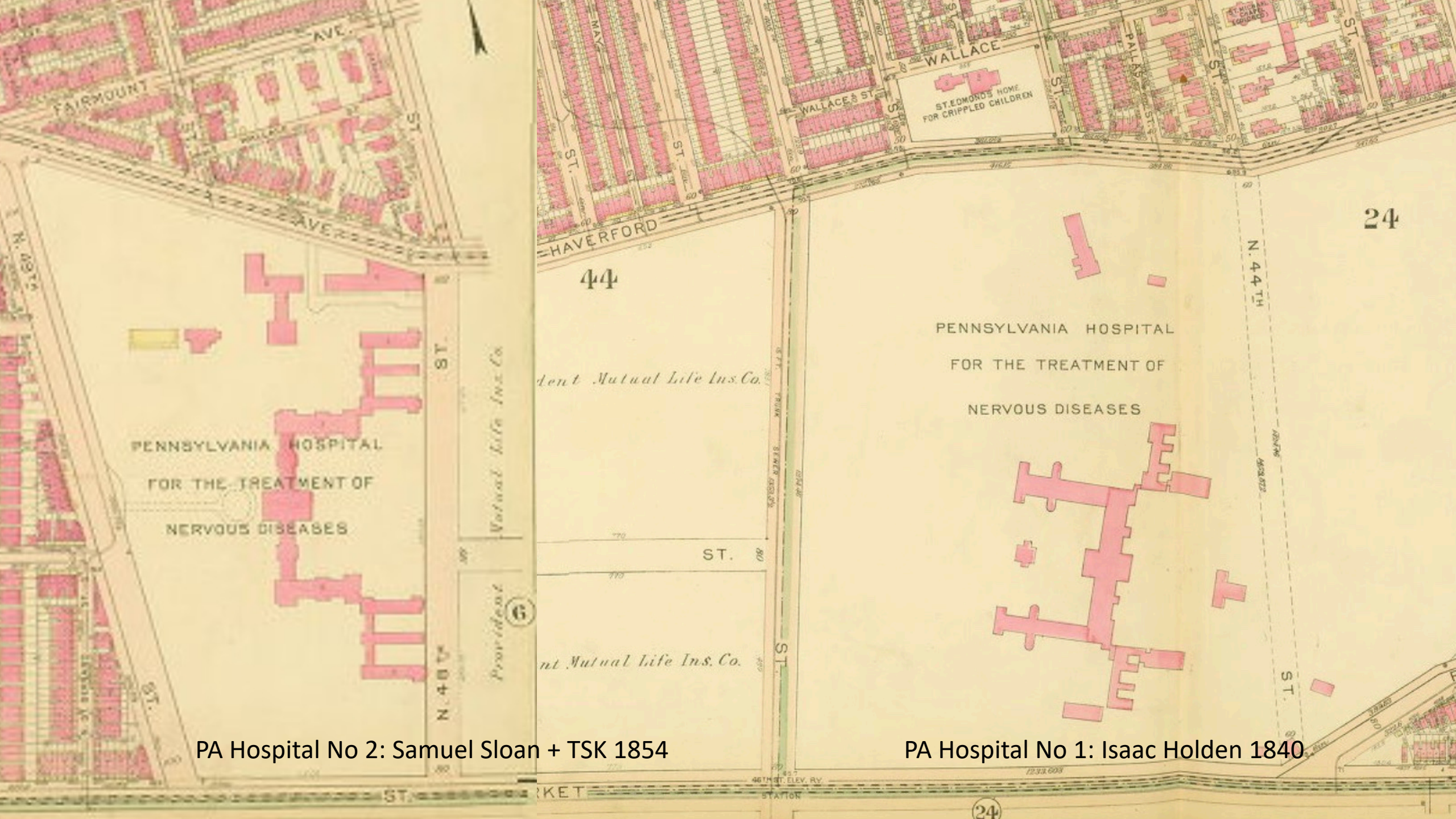




J. Sloan. Art.

J. M. Butler.

PENNSYLVANIA HOSPITAL FOR THE INSANE.
DEPARTMENT FOR MALES.



PA Hospital No 2: Samuel Sloan + TSK 1854

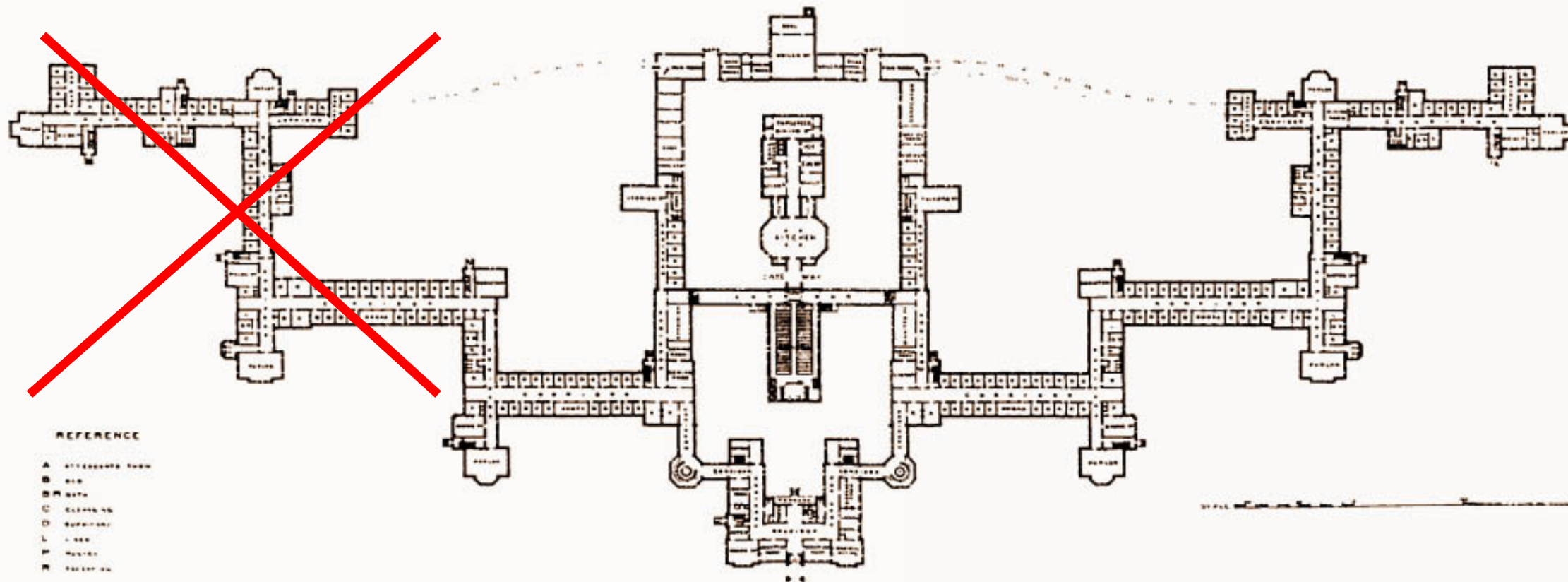
PA Hospital No 1: Isaac Holden 1840

DESIGN FOR THE HUDSON RIVER STATE HOSPITAL FOR THE INSANE

POUGHKEEPSIE N. Y.

1887

VAUX, WITHERS & CO. ARCHITECTS



PLAN OF PRINCIPAL FLOOR

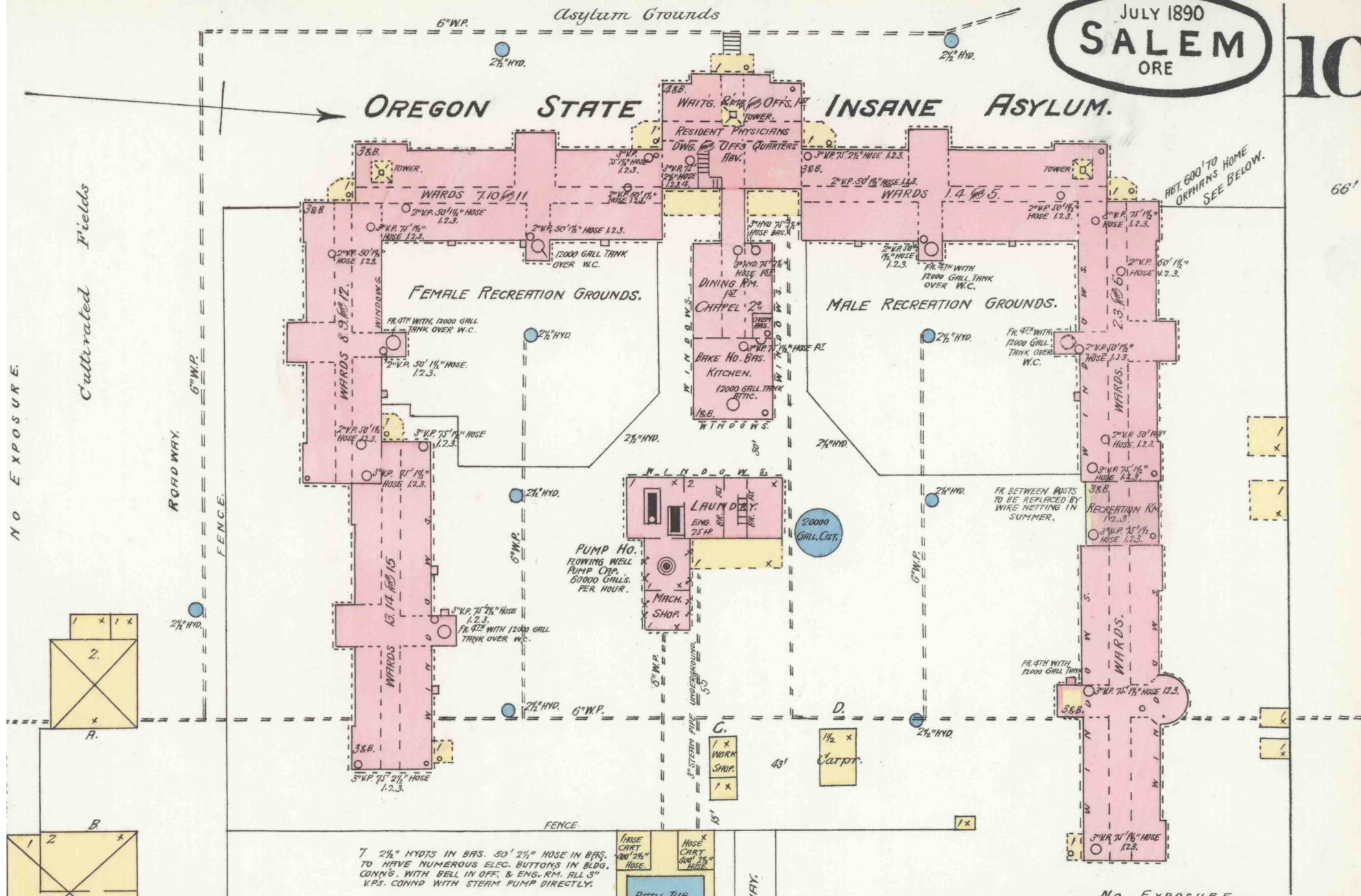
BY VAUX, WITHERS & CO. ARCHITECTS

Wilmington Place

10 Wilmington Place
Retirement Community

Dayton State Hospital, OH, 1855



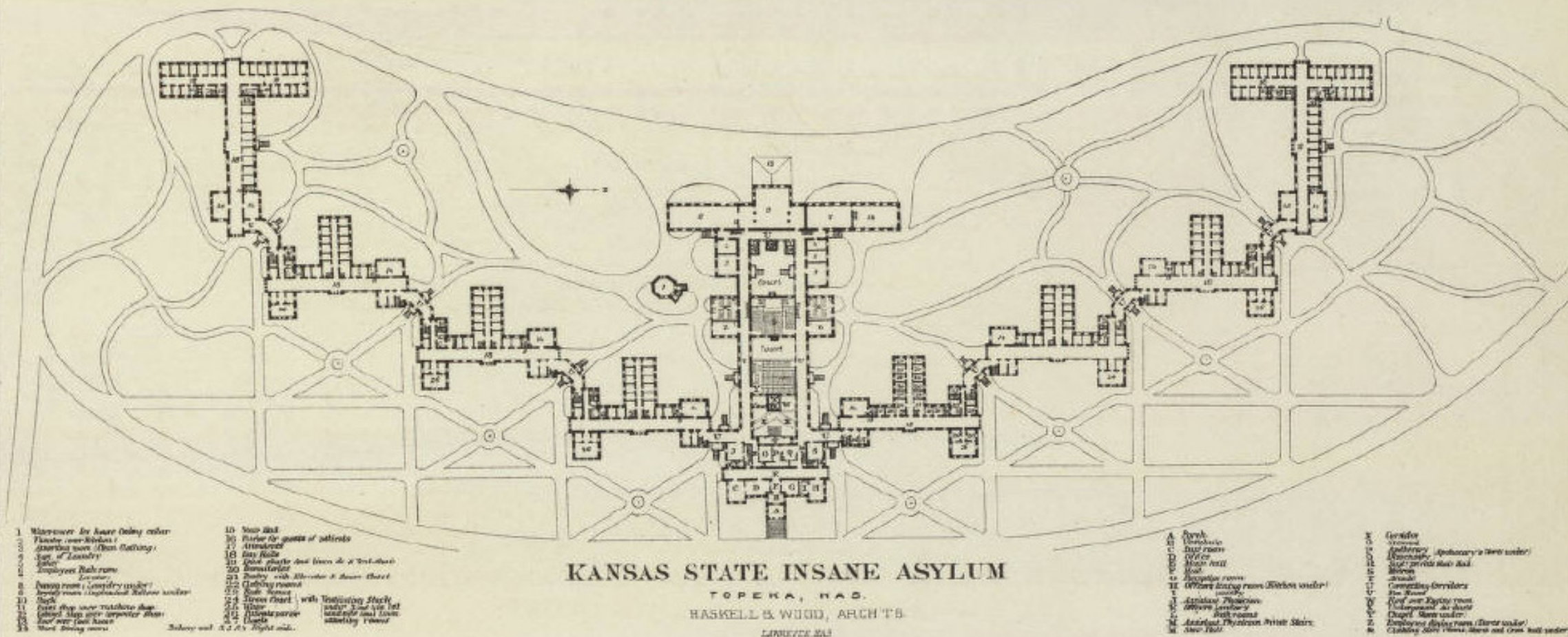


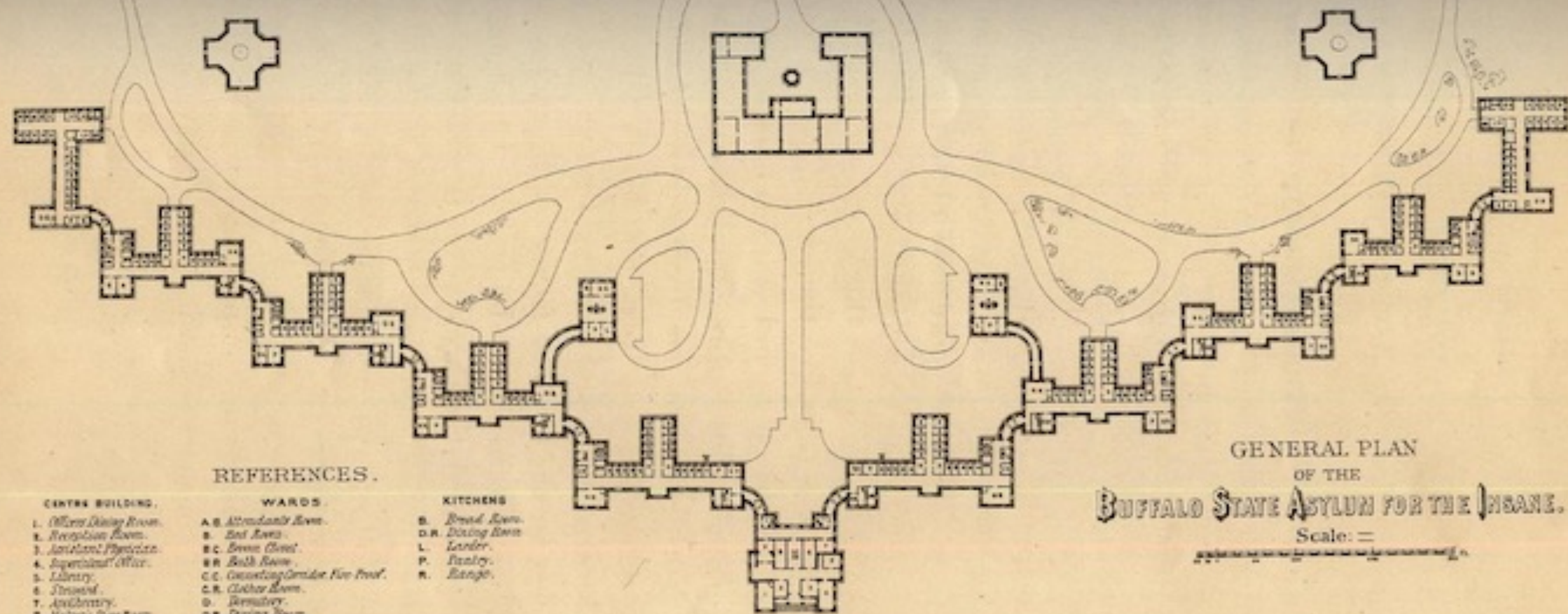


HOSPITAL FOR THE INSANE
SPENCER, W. VA.



Callan Hospital, Sydney, Australia, 1878-2008





REFERENCES.

CENTRE BUILDING.

- 1. Officers Dining Room.
- 2. Reception Room.
- 3. Assistant Physician.
- 4. Superintendent's Office.
- 5. Library.
- 6. Steward.
- 7. Apothecary.
- 8. Nurses' Sleep Room.
- 9. Patients' Office.

WARDS.

- A.B. Attendants' Room.
- B. Bed Room.
- B.C. Dressing Room.
- B.D. Bath Room.
- C.C. Guarding Corridor Fire Proof.
- C.R. Corridor Room.
- D. Dressing Room.
- D.R. Dining Room.
- E.C. General Clerk.
- F. Parlor.
- R.R. Reception Room.
- W.C. Water Closet.
- W.R. Wash Room.

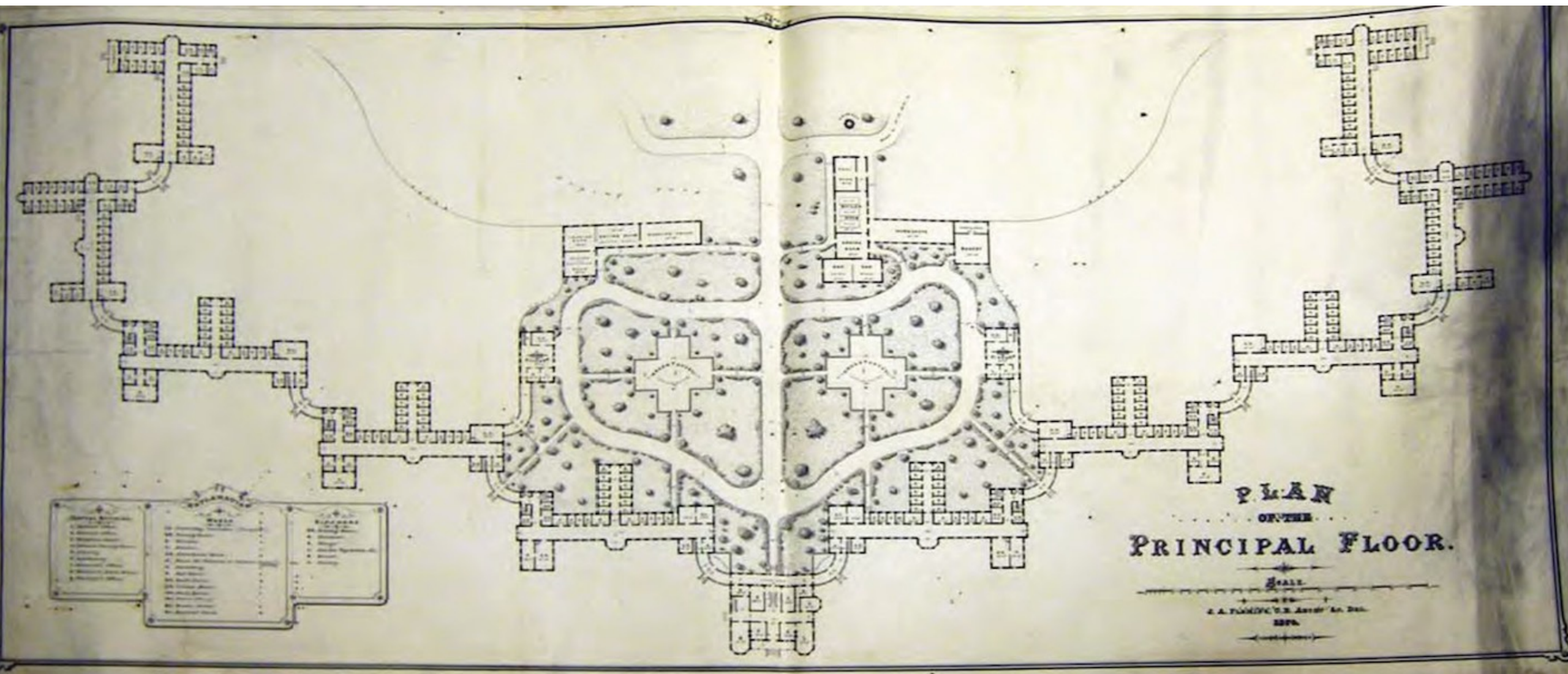
KITCHENS.

- B. Bread Room.
- D.R. Dining Room.
- L. Larder.
- P. Pantry.
- R. Range.

GENERAL PLAN OF THE BUFFALO STATE ASYLUM FOR THE INSANE.

Scale: =

1 inch = 100 feet



Buffalo State Asylum (Alternate Plan)



Buffalo State Asylum, 1880



Traverse City, Michigan 1885

OCK ATHENS BLOCK

ATHENS BLOCK

ATHENS BLOCK

ATHENS BLOCK

ATHENS

ATHENS BLOCK

ATHENS BLOCK

ATHENS BLOCK

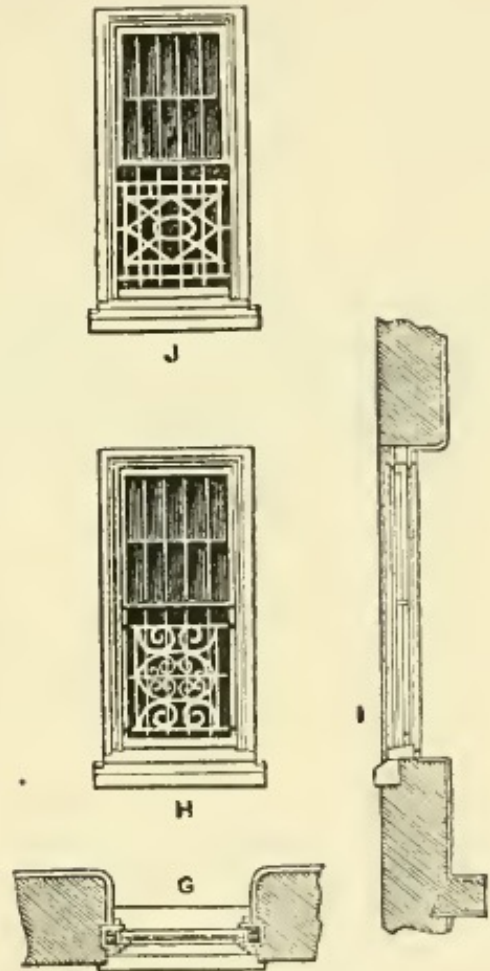


Fergus Falls State Hospital, MN, 1890

*Commonsense sustainable systems,
with natural ventilation from
prevailing winds and generous
natural light*



PLATE XVIII.



WINDOWS AND WINDOW-GUARDS.





Stereoscopic view of Dr. Kirkbride, reputedly the first to use photography in the therapeutic treatment of mental illness with frequent magic lantern shows



PHANTOMS

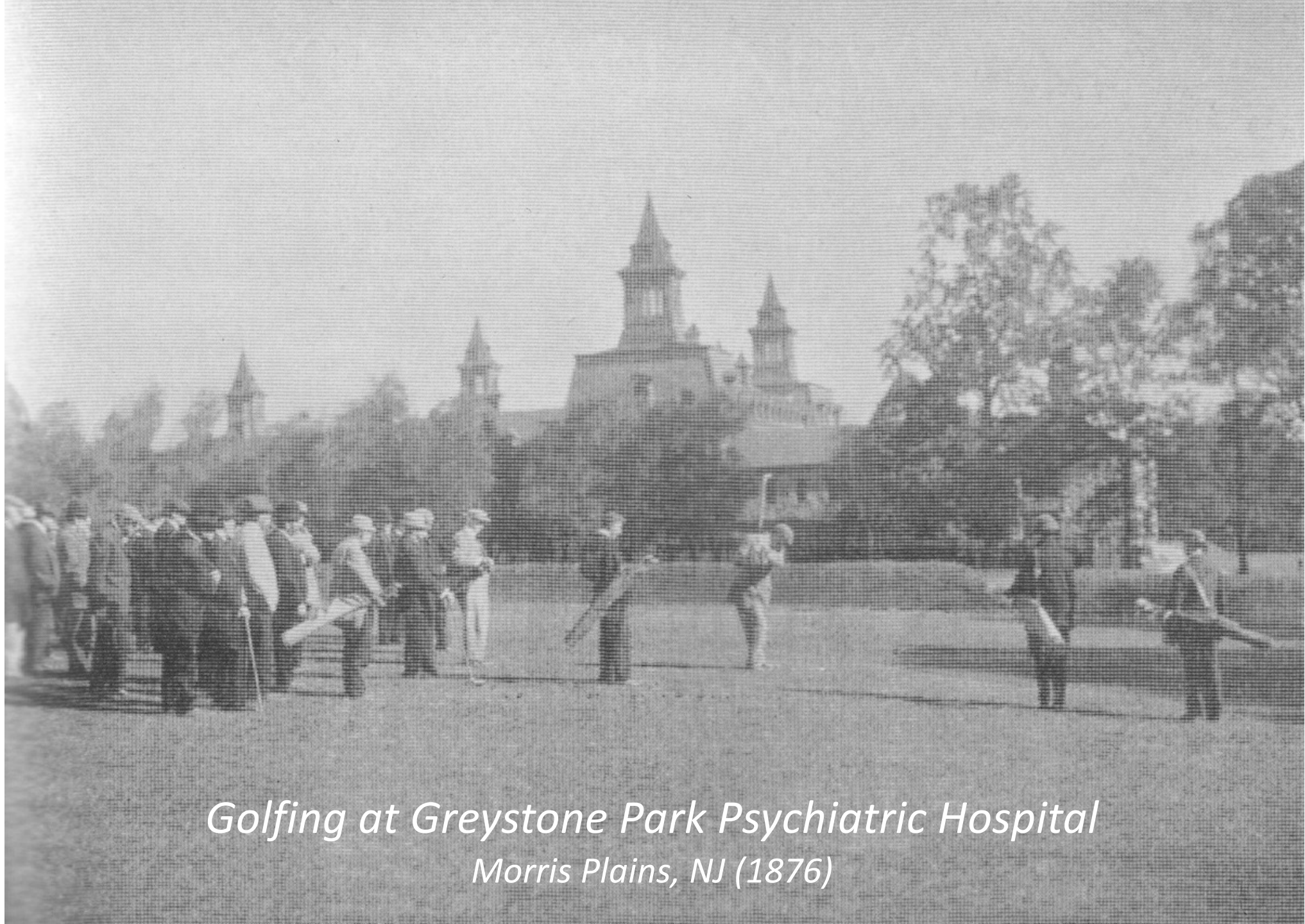
***If the Kirkbride Hospitals are haunted,
they are haunted by the difference between how history is conceived
and how it plays out.***

— Colin Dickey, *Ghostland*



Main Entrance to Bloomingdale Asylum, White Plains, N. Y

Dear Carrie I am having a fine time. Love to all. Alice



Golfing at Greystone Park Psychiatric Hospital
Morris Plains, NJ (1876)



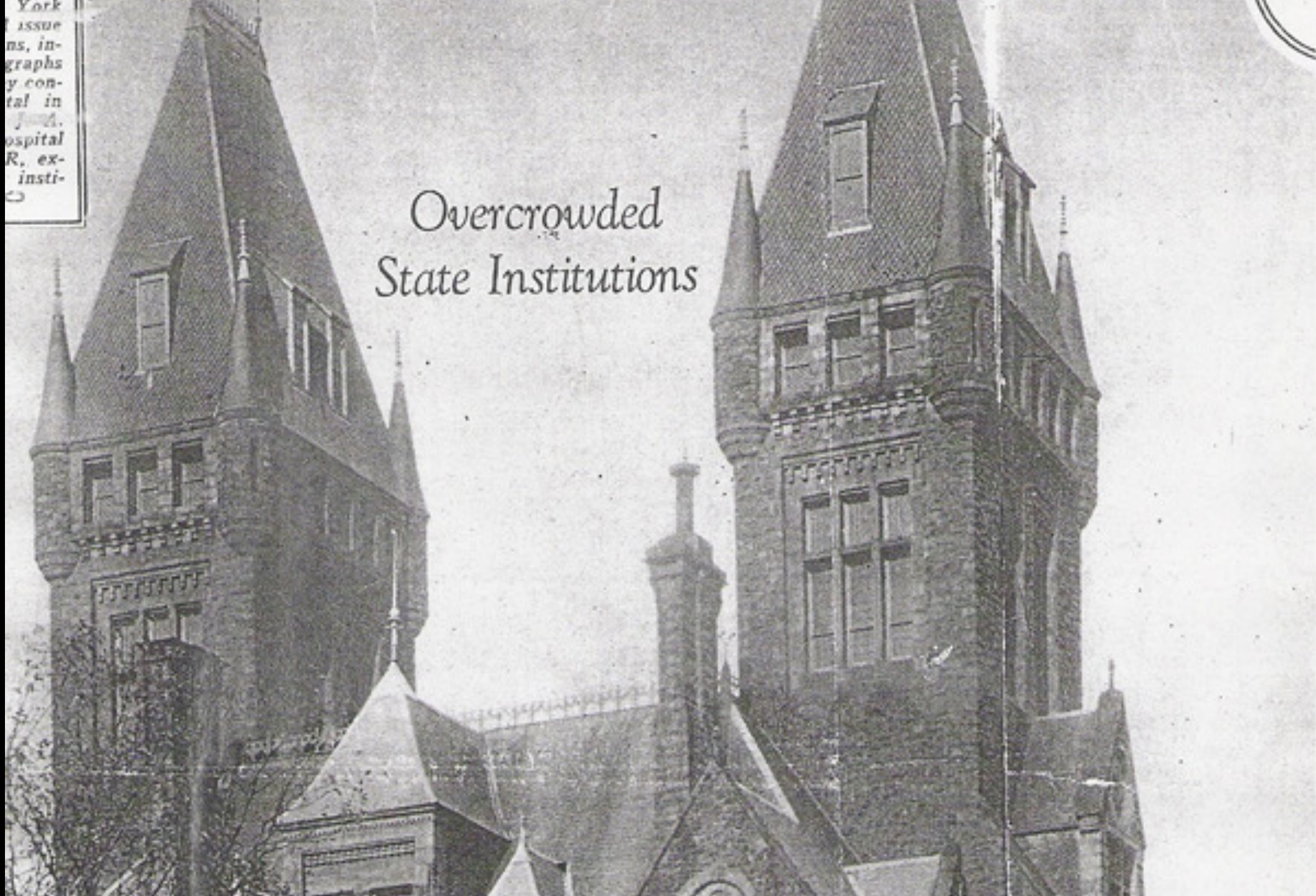
Sewing, weaving and wickerwork at Hudson



Hudson River State Hospital
Poughkeepsie, NY (1873)

York
issue
ns, in-
graphs
y con-
tal in
J. A.
ospital
R, ex-
insti-

Overcrowded State Institutions





Census Board
c. late 19th century

Table 1. Population by Tribe.
Here 6/30/26. Since opening.

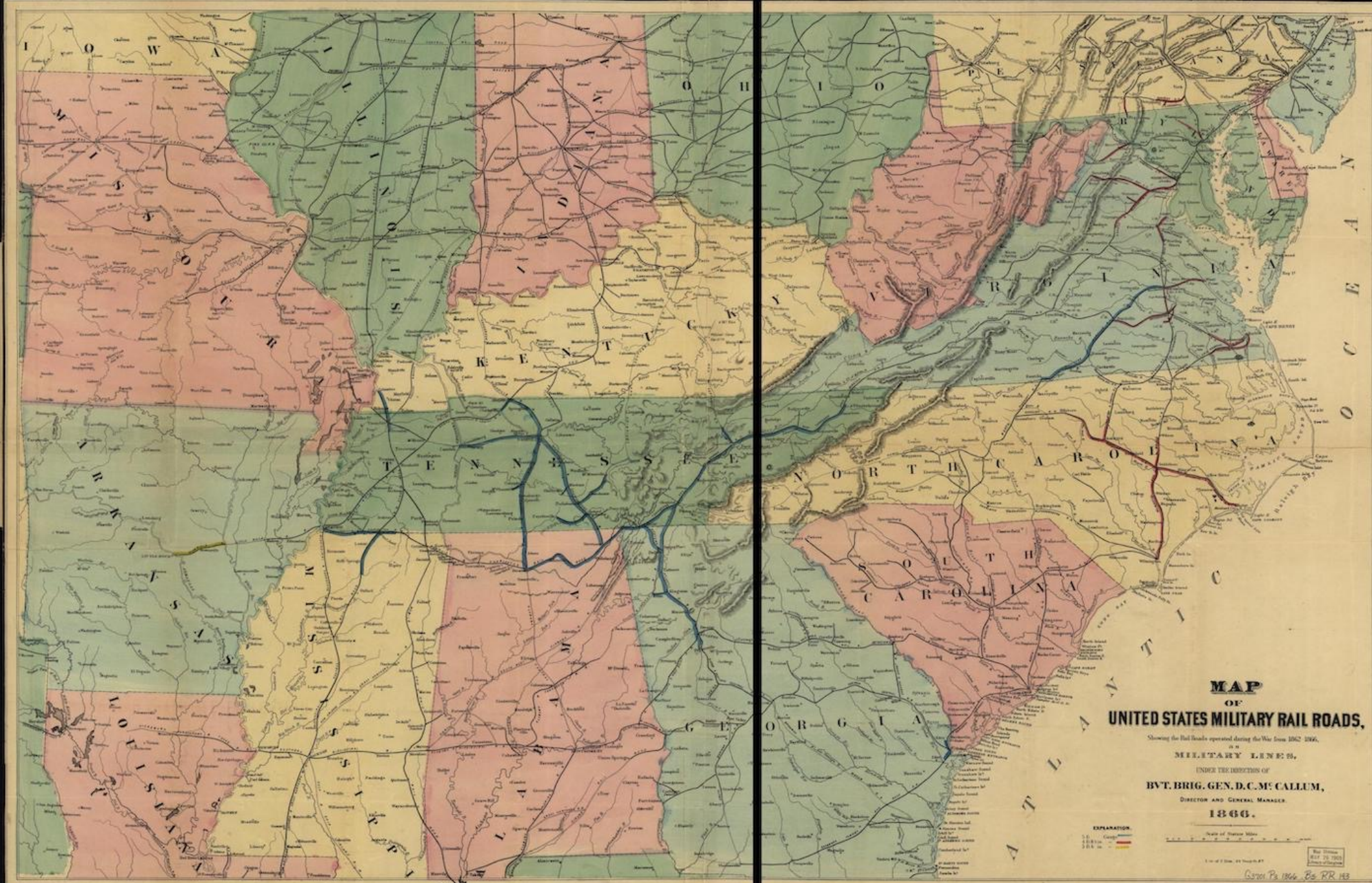
Tribe.	Here 6/30/26.	Since opening.
1. Apache,	0	5
2. Arapaho,	0	2
3. Arickaree,	2	4
4. Bannock,	0	3
5. Blackfeet,	2	6
6. Caddo,	1	3
7. Chemehueve,	1	1
8. Cherokee,	5	15
9. Cheyenne,	0	2
10. Chickasaw,	1	2
11. Chippewa,	14	43
12. Choctaw,	0	3
13. Colville,	1	1
14. Comanche,	0	1
15. Cree,	1	1
16. Creek,	1	5
17. Crow,	0	2
18. Flathead,	0	4
19. Gros Ventres,	1	4
20. Hoopa,	1	1
21. Hopi,	1	1
22. Kickapoo,	0	1
23. Klamath,	1	4
24. Makah,	0	2
25. Mandan,	1	1
26. Menominee,	8	20
27. Mesa Grande,	0	1
28. Modoc,	0	1
29. Moqui,	0	1
30. Navajo,	6	17
31. N. Cheyenne,	1	2
32. Omaha,	1	1
33. Osage,	0	5
34. Papago,	7	13
35. Pawnee,	0	1
36. Piegan,	0	4
37. Pima,	2	4
38. Piute,	3	10
39. Potawatomi,	4	7
40. Puyallup,	0	1
41. Pueblo,	3	10
42. Quapaw,	0	1
43. Sac and Fox,	1	2
44. Seminole,	0	2
45. Shawnee,	0	1
46. Shoshone,	2	3
47. Sioux,	16	73
48. Umatilla,	0	1
49. Ute,	0	5
50. Walapai,	1	1
51. Washoe,	1	1
52. Yakima,	1	1
53. Total,	92	317.

Data at St. Elizabeth's, Washington, DC

Every country has its ghosts

— Leila Taylor, *Darkly*





**MAP
OF
UNITED STATES MILITARY RAIL ROADS,**
Showing the Railroads operated during the War from 1862-1866,
in the
MILITARY LINE,
UNDER THE DIRECTION OF
BVT. BRIG. GEN. D.C.M. CALLUM,
DIRECTOR AND GENERAL MANAGER,
1866.

EXPLANATION.
— Regular Railroads
— Military Railroads
— Railroads under construction

Scale of Statute Miles.
1 inch = 20 miles

1 in. = 20 miles, 40, 60, 80, 100, 120, 140, 160, 180, 200, 220, 240, 260, 280, 300, 320, 340, 360, 380, 400, 420, 440, 460, 480, 500, 520, 540, 560, 580, 600, 620, 640, 660, 680, 700, 720, 740, 760, 780, 800, 820, 840, 860, 880, 900, 920, 940, 960, 980, 1000

Map drawn
May 15, 1866
Gazette of 1866, No. 113



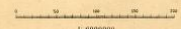
MAP OF ROUTES
FOR A
PACIFIC RAILROAD

Compiled to accompany the Report of the

JOHN JEFFERSON DAVIS, SEC. OF WAR

In Office of P. R. R. Surveys
1855.

Statute Miles



Note - This map is a hurried compilation of all the authentic surveys and is designed to exhibit the relations of the different routes to each other, the distances between points, and the general character of the country.

“[It is] the **OBVIOUS DUTY** of those having the care of indigent insane, for whom provision is made at the public expense, **TO MAKE THEM SELF-SUPPORTING.**”

— SUPERINTENDENT CHARLES NICHOLS

Hauntology

What if the Civil War had never happened?

**What if Franklin Pierce, 14th U. S. President,
had not vetoed the 1854 Bill for the Benefit of the
Indigent Insane?**

What if Quakerism had never happened, Pt. 2?



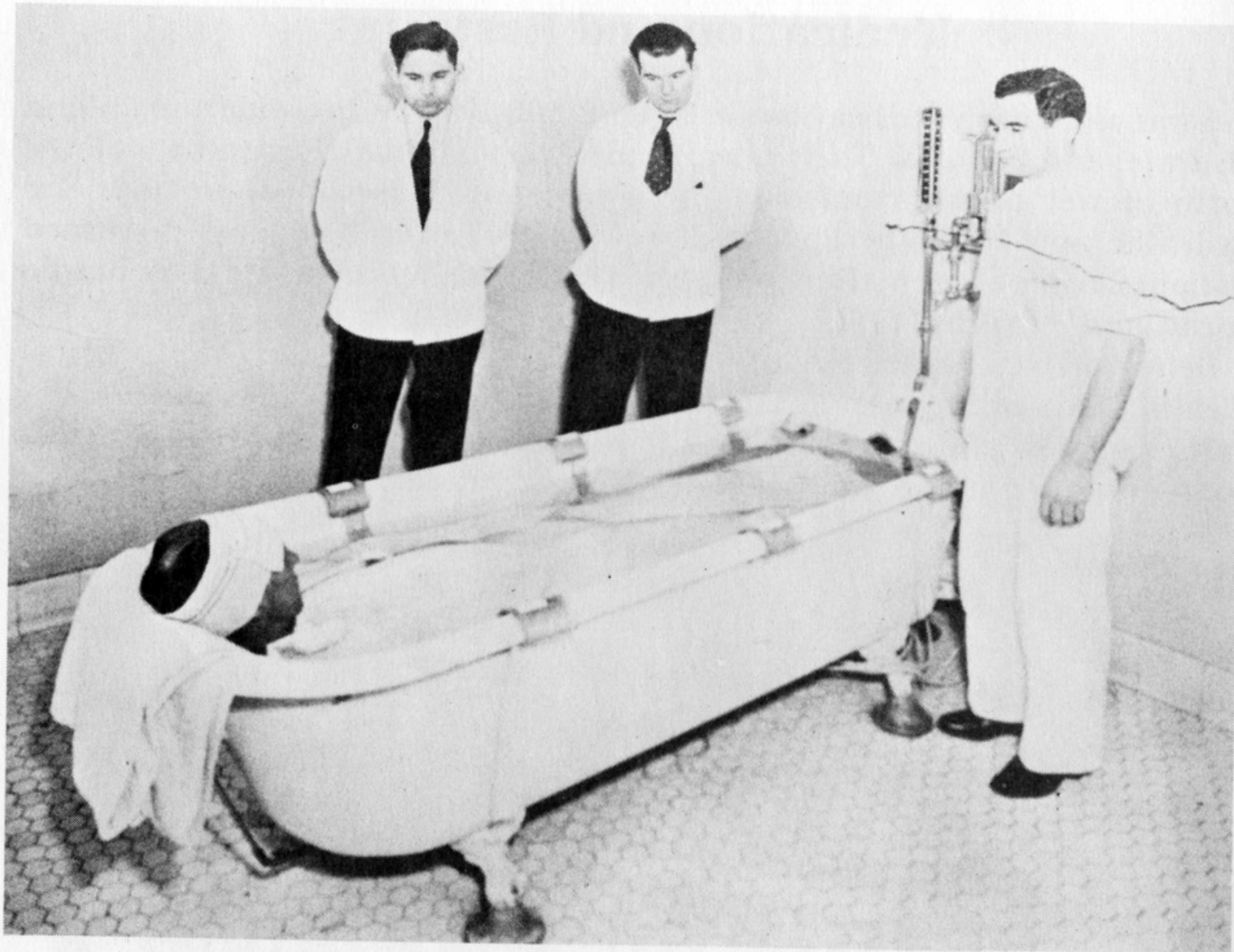
Charles Lord

What if JFK had not been assassinated in December 1963?





Photo: Christopher Payne



The 3:1 staff to patient ratio depicted here did not reflect reality

Hydrotherapy c. 1935



Photo: Christopher Payne





Continuity + Memory





Danvers State Hospital, MA, 1878







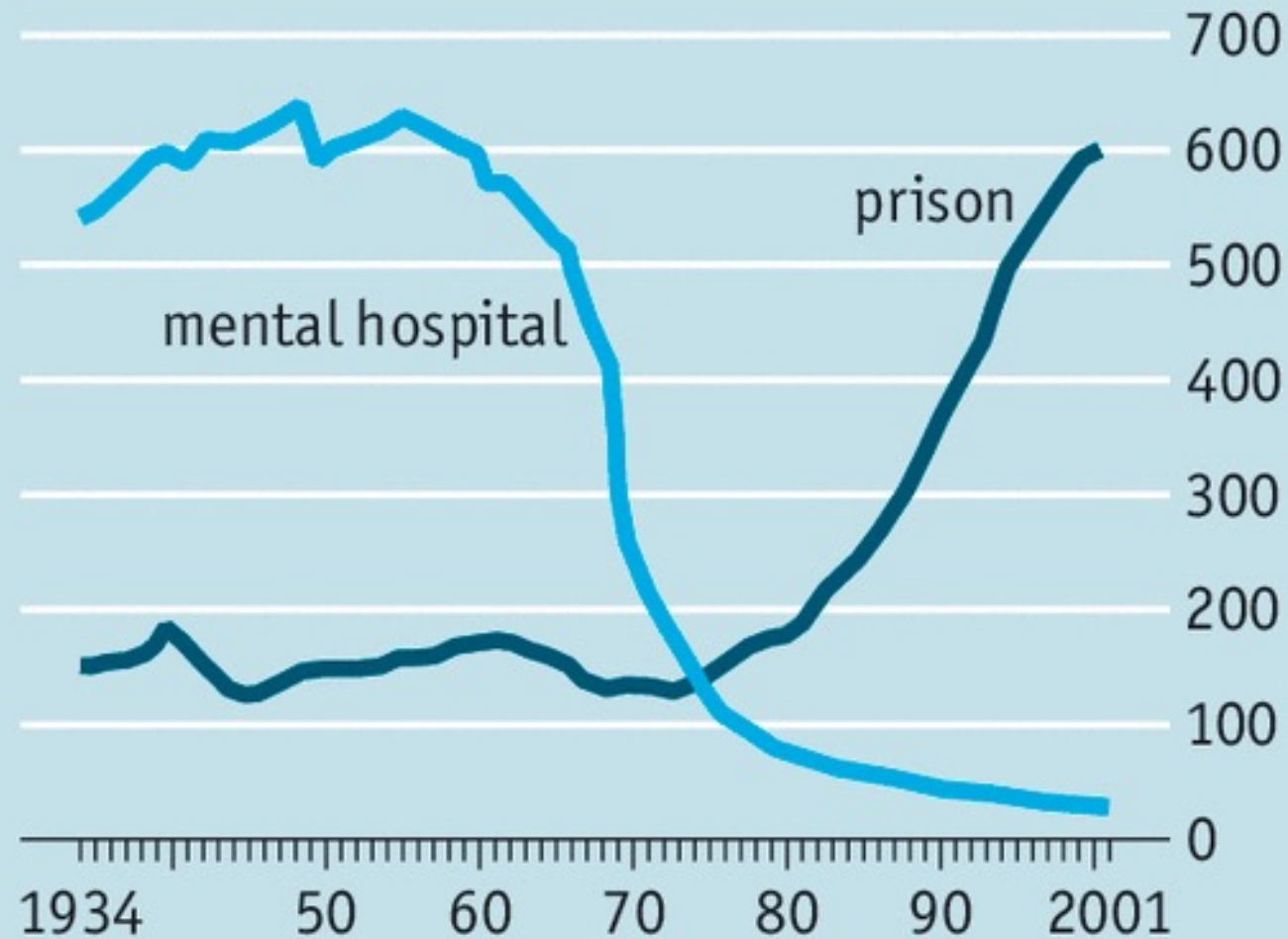
Independence State Hospital, IA, 1873

Eastern Oregon
Correctional...



Out of sight...

Americans held in:
Per 100,000 adults



Source: B.E. Harcourt, "An Institutionalisation Effect"



YOUR OPINION

AFTERLIVES


***The language of ghosts
has become an important way of talking about architecture and place.***

— Colin Dickey, *Ghostland*

A photograph showing the demolition of a large, multi-story building. A red excavator with a hydraulic arm is positioned at the top of the structure, actively demolishing the upper portion. A large cloud of dust and debris is being thrown into the air by the demolition process. The building's facade is made of light-colored stone or concrete, with some windows visible. The sky is blue with some white clouds.

Demolition of Greystone, 2015
Cost to taxpayers: \$34 million

Photo: Rusty Tagliareni

A black and white photograph of a person with long dreadlocks holding a rectangular sign. The sign has a decorative, hand-drawn wavy border. Inside the border, the text "destroy the walls, destroy the stories within" is written in a cursive script. The word "within" is underlined with three horizontal lines. The person's hands are visible holding the sign, and their dreadlocks are visible in the background.

destroy the
walls, destroy
the stories
within



Greystone Aftermath

Photo: Jody Johnson



HIER WOHNTE
ROSA SCHNELLER
GEB. KLEIN
JG. 1888
DEPORTIERT 1943
ERMORDET IN
AUSCHWITZ

Stolpersteine (stumbling stones), Germany+

2017 AUTHOR AWARD

WINNER

- POPULAR NON-FICTION -

NJSAA

New Jersey Studies Academic Alliance

IMAGES
of America
GREYSTONE PARK
PSYCHIATRIC HOSPITAL



Rusty Tagliareni and Christina Mathews
Introduction by Robert Kirkbride

ARCHITECTURE
2016 NYCDFW WINNER

GREYSTONE RISING
JODY JOHNSON / GLIDEBYJJ
&
LISA MARIE BLOHM



Greystone Park Psychiatric Hospital (1876-2008) Oral History Project

[Home](#)[About](#)[Greystone History](#)[Oral Histories – By Categories](#)[List of Interviewees](#)[Additional Information](#)[News Coverage](#)[facebook](#)

Hearing the Voices of the Former Greystone Hospital Community

"Oral history gives us an opportunity to move beyond the formal records of an institution to capture the personal impressions and experiences of those connected with it. These interviews with people in many different capacities at the Greystone Park Psychiatric Hospital offer compelling stories of the community that developed within the facility, and the impact it had on their lives."

– Donald A. Ritchie, author of *Doing Oral History*

Stephanie Kip – Project Founder and Manager

Robert Kirkbride, PhD – Project Advisor

#PRESERVATIONWORKS

2015 HISTORIC ASYLUM PRESERVATION CONFERENCE

AT

PRESENTED BY:

THE VILLAGE AT GRAND TRAVERSE COMMONS

PROJECTKIRKBRIDE

APRIL 25, 2015

ABANDONEDAMERICA

9:00AM

GREYSTONE'S LAST STAND

PRESERVE GREYSTONE

THE VILLAGE AT GRAND TRAVERSE COMMONS

KIRKBRIDE HALL

SPRINGBOARD FOR THE ARTS

FRIENDS OF THE KIRKBRIDE

ROBERT KIRKBRIDE

KIRKBRIDE HD

WWW.FACEBOOK.COM/PRESERVATIONWORKS1

A detailed architectural floor plan of a large building complex, rendered in a light tan color. The plan shows multiple interconnected wings, courtyards, and individual rooms, many of which are numbered. The layout is symmetrical, with a central horizontal corridor or wing. The plan is positioned behind the main title text.

PRESERVATIONWORKS

<http://thepreservationworks.org>



← Athens State Hospital →

Hospital Name

Athens State Hospital

City

Athens

State

OH

Status

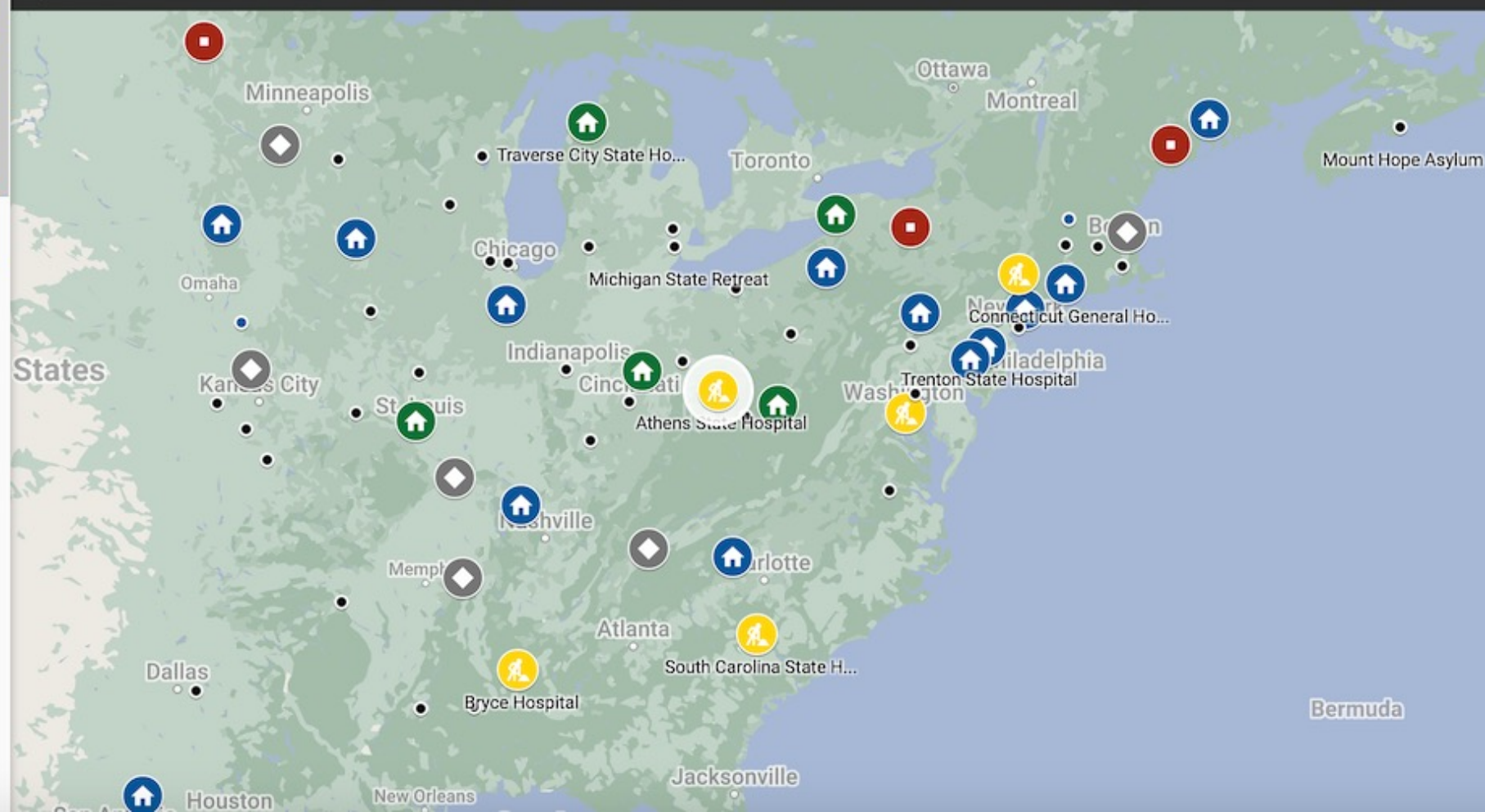
Under Rehab / Redevelopment - Plan in Place

Tour

<https://athenshistory.org/walking-tour-of-the-historic-athens-asylum-2/>

epreservationworks ★

ate your own.



HEROES OF PRESERVATION

PreservationWorks features the people who preserve these amazing buildings and their legacy. Individuals who are at the forefront of Kirkbride preservation. We present a brief biography about each preservationist, and the building they are working with.

PW INTERVIEWS:



Shawna Wolfe (Bolin) – Athens State Hospital – Athens, OH

[Read More](#)



Joe Williams – 10 Wilmington Place – Dayton, OH

[Read More](#)



Gene & Maxine Schmidt – Fergus Falls State Hospital – Fergus Falls, MN

[Read More](#)

[HOME](#)[● THE KIRKBRIDE PLAN](#)[OUR TEAM](#)[MEMBERSHIP](#)[CONNECTIONS](#)[NEWS](#)[STORE](#)

The Kirkbride Plan



TRANSFORMING MEMORY: AN ADAPTIVE ...

Part One

The Costs of Forgetting

[read more](#)

NEW MODEL FOR AN OLD DILEMMA?

Thoughts on "Treat, Release and Repeat":

Season 3, Episode 2 of VICE (Showtime)

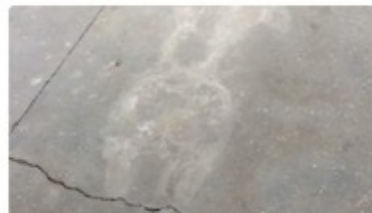
Directly or indirectly, each of us has experienced the toll

[READ MORE](#)

CHALLENGES PANDEMICS PRESENT TO ...

The Covid-19 pandemic has wrought havoc at scales that are simultaneously global, national, communal and personal. The challenges presented to our mental well-being are profound

[READ MORE](#)



MARGARET SCHILLING'S TRACE AT THE ...

Kirkbride Plan Hospitals for the insane, like all asylums, have complex and difficult histories. Embracing those histories, at a local community level and at a broader

[READ MORE](#)



NEW FRIENDS AT OREGON STATE HOSPI...

Below is Part 2 of 2 mini-reports on my recent visit to Oregon State Hospital, the oldest remaining State building in Oregon, and one of the few remaining Kirkbride Hospitals

[READ MORE](#)



NEW FRIENDS AT OREGON STATE HOSPI...

Below is Part 1 of 2 mini-reports on my recent visit to Oregon State Hospital, the oldest remaining State building in Oregon and one of the few remaining Kirkbrides west of t

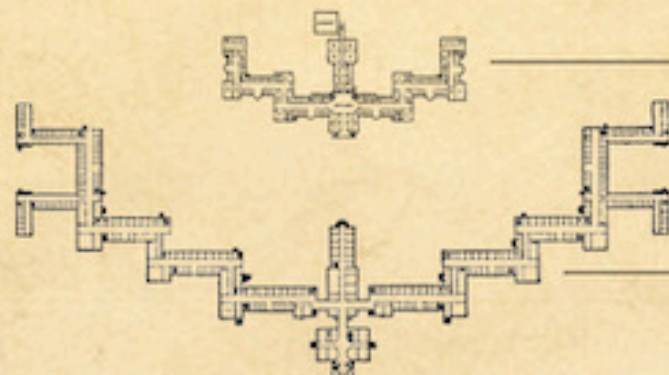
[READ MORE](#)



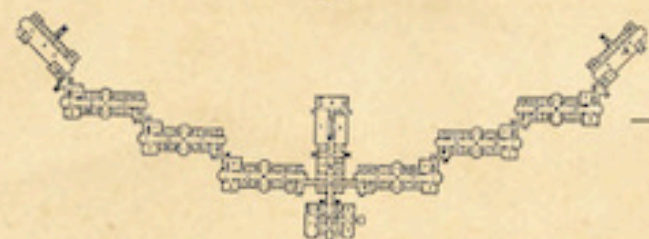
Trenton, NJ - 480ft
1848



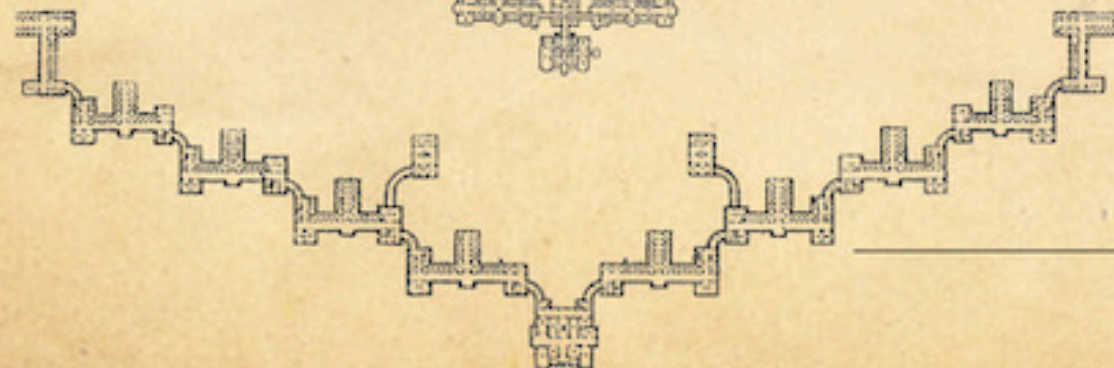
St. Elizabeths, D.C. - 750ft
1852



Northampton, MA - 519ft
1858



Greystone Park, NJ - 1,243ft
1876



Danvers, MA - 1,100ft
1878

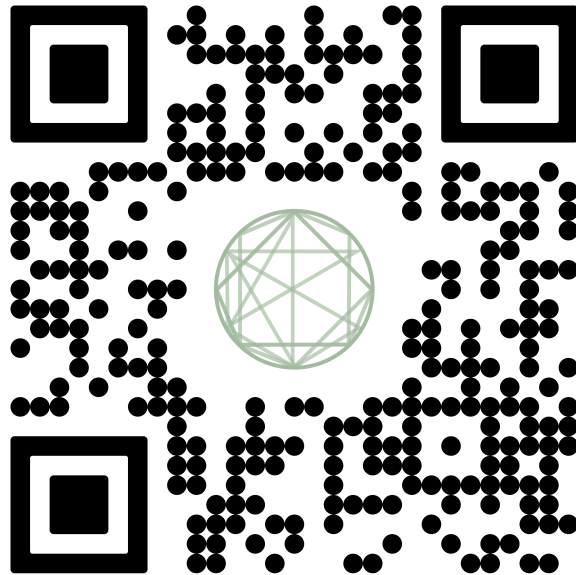
Buffalo, NY - 2,200ft
1880

PreservationWorks: Buffalo Weekend
September 22-24, 2023
Richardson Olmsted Complex/Buffalo State Hospital, Buffalo, NY

Sound the Asylum

binaural resonant frequencies
Recorded and produced by
Melissa Grey & David Morneau

Three audio stops on self-guided tours for three rooms:
Male Ward B Barbershop (#116)
Male Ward B Dormitory (#117)
Female Ward H Parlor (#114)



flowercat.org/sta



The Inmates of Willard 1870 to 1900 / A

Genealogy Resource

 Search

History of The Willard Asylum for the Insane (Willard State Hospital), Former New York State Insane Asylums (State Hospitals), Custodial Institutions, and Mental Illness of the 19th Century. Current Information on Anonymous Graves, Historical Articles, Laws, Patient Names, and Helpful Links Abound! The Blog is an Extension of My Book and Was Created for Descendants of Former Patients, Genealogy Geeks, and History Buffs. Hopefully, This Blog Will Make People Aware of the Thousands of People Who Were Buried in Anonymous Graves in Former NY State Hospital & Custodial Institution Cemeteries. The Book, Blog, Posts, and Pages Have Been Researched, Written, and Developed by Linda S. Stuhler.







MUSEUM EXCHANGES
Oregon State Hospital



The Kirkbride Chronicle

Welcome to the First Issue of The Kirkbride Chronicle, a quarterly newsletter published by PreservationWorks, an advocacy network committed to the preservation, restoration and adaptive reuse of the remaining Kirkbride Plan hospitals. Although fewer than half of the original 75 Kirkbrides remain, in various states of use, disuse or disrepair, recent successful rehabilitations demonstrate that the adaptive reuse of these complex and magnificent buildings is commonsense and achievable, strengthening economic growth and cultural identity in their respective communities. By sharing knowledge and resources, it is our aim to support local preservation efforts and inform the public on the historic and global significance of these irreplaceable structures.



Buffalo Tour 2023

In July, PreservationWorks promoted and sold out our annual photography benefit tour at the former Buffalo State Hospital, now known as the Richardson Olmsted Complex. Our first tour sold out in 19 minutes! We will host two 4-hour photography tours, one on Saturday, September 23rd, and one on Sunday, September 24th.

We are also very excited that Dr. Kirkbride, our spokesperson, will give a talk, "Kirkbride on Kirkbrides," after our tour on Saturday. If you are attending one of the tours, or will be in the area that weekend, keep your eye on our social media for an opportunity to get together after the tour on Saturday. We thank you for your support and helping to making sure our biggest fundraiser of the year is so successful!

Dr. Thomas Story Kirkbride

Born : July 31, 1809, Morrisville, Pennsylvania

Death : December 16, 1883, Philadelphia, Pennsylvania

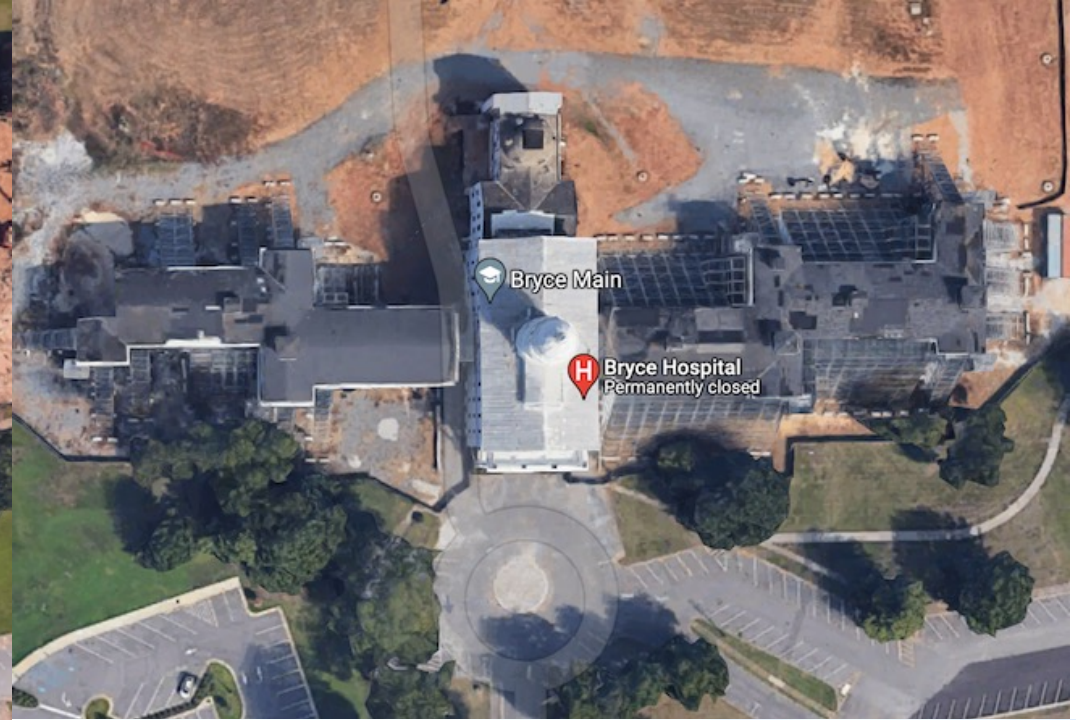
Thomas Story Kirkbride, a Quaker doctor, published his influential treatise on the construction and management of the ideal psychiatric hospital based on Enlightenment beliefs in the therapeutic powers of architecture, beauty, and respectful care.

[Read More about Dr. Kirkbride here...](#)



The Babcock Building, Columbia, SC, 1858/85





Bryce State Hospital, Tuscaloosa, AL, 1861



PUBLIC STAKEHOLDER REPORT:
A MASTER DEVELOPMENT PLAN
FOR THE BROUGHTON DISTRICT (MORGANTON, NC)



FUTURE PROJECT: MUSEUM AND HOSPITALITY VILLAGE (RENDERING)

Broughton State Hospital, Morganton, NC, 1883



Traverse City State Hospital, MI, 1885



Hudson River State Hospital, NY, Photo: Yvonne Laube

WINDOWS OF LIBERATION

HUDSON RIVER PSYCHIATRIC CENTER MEMORIAL PROJECT

PARSONS BFA ARCHITECTURAL DESIGN

AD STUDIO 4

HAZEL KIM



PART I: THE ADMIN BUILDING - A CENTRE FOR LIGHT



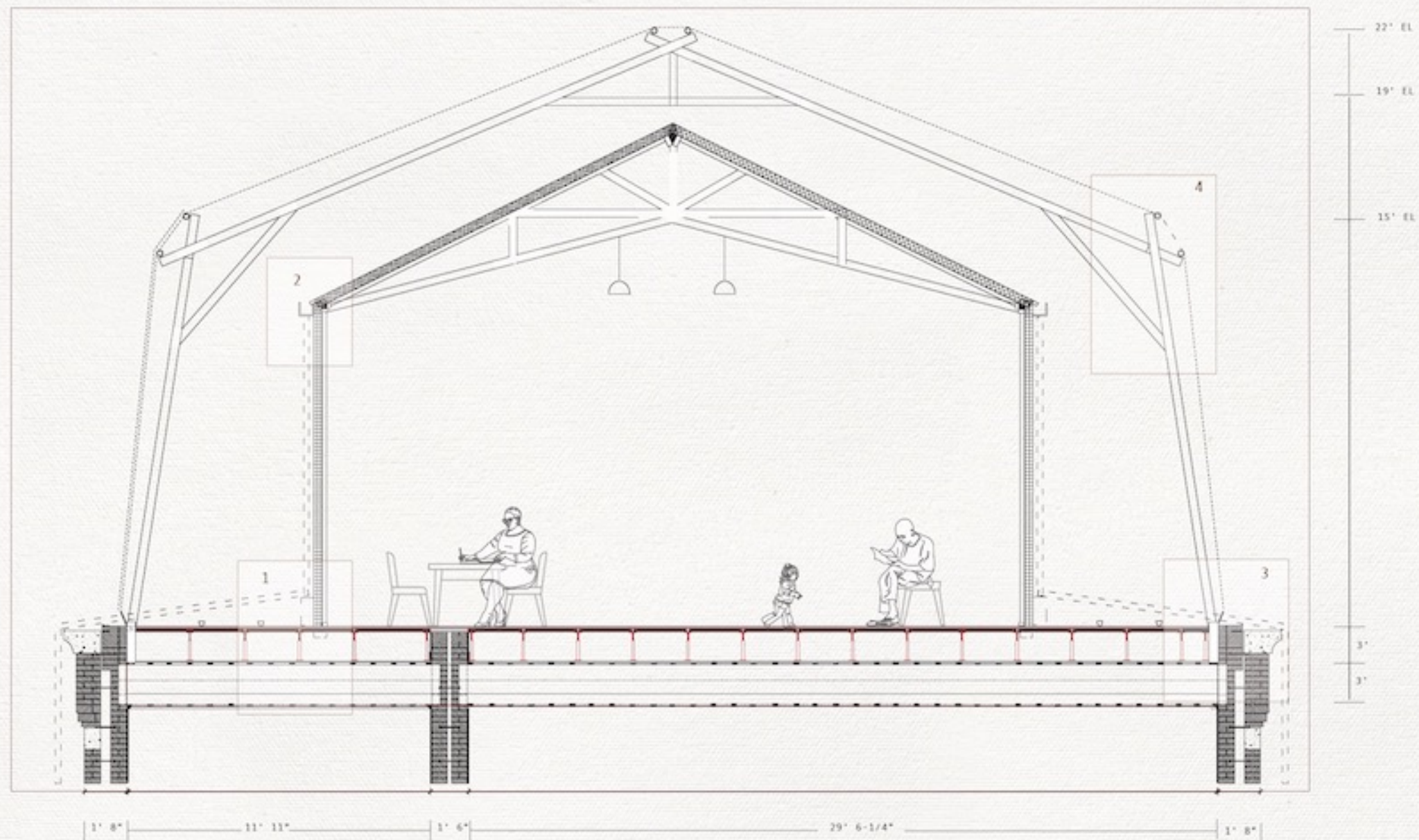
Carbon Fiber + Glass windows
= "Transparent" Roof
filled with light
library

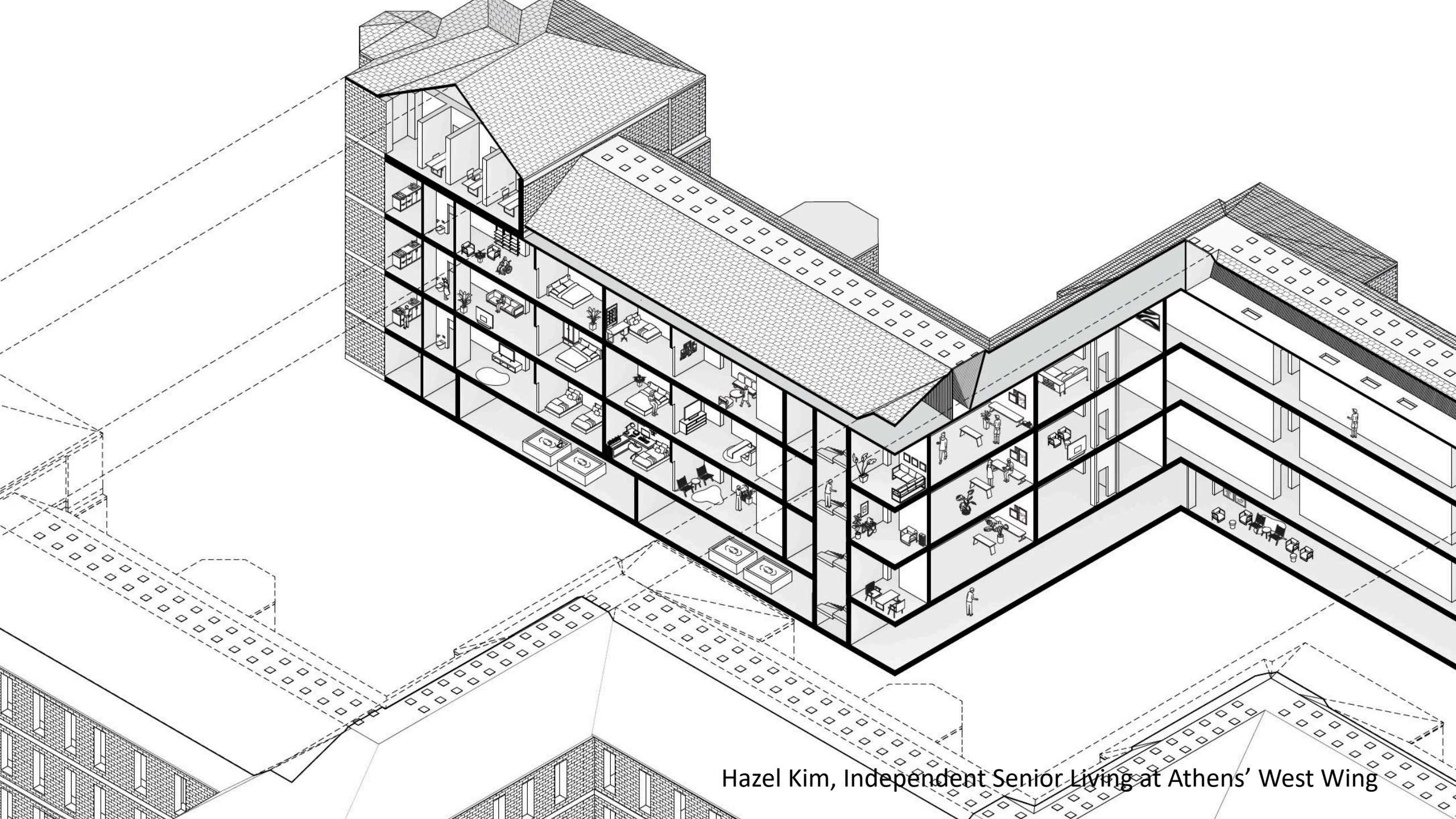


Glass Atrium uses repurposed
window frames
central garden
seating,
circulation



TO TRANSFORM THE CENTRAL ADMIN AND NORTH
WING BUILDINGS AT HRSH INTO WELL ORGAN-
ISED AND SUSTAINABLE UNITS OF HOUSING
FOR EX-PRISONERS RETURNING TO SOCIETY,
ACCOMPANIED BY LEARNING FACILITIES,
MENTAL HEALTH SUPPORT, AND COMMUNITY
GATHERING FOR BOTH THEM AND LOCAL TOWN
MEMBERS OF POUGHKEEPSIE.

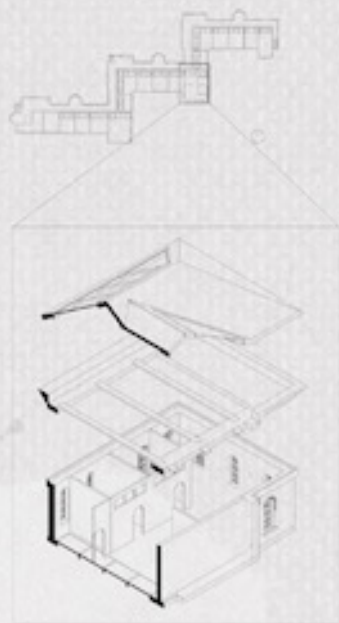




Hazel Kim, Independent Senior Living at Athens' West Wing

2 BEDROOM APARTMENT
1000 FT SQ

AS TO ALLOW THE DWELLER TO RISE WITH THE SUN. THE LIVING AREA FACES SOUTH, WITH LARGE WINDOWS THAT PERMIT WARM LIGHT AND PROVIDE A VIEW TO THE NATURE BELOW. THE KITCHEN IS THE HEART OF THE SPACE, WARMING FROM THE INSIDE. FEATURES ARE DESIGNED JUST ENOUGH TO GIVE UNSPOKEN RECOMMENDATIONS AS TO HOW TO USE EACH ROOM WITHOUT BEING SO PRESCRIPTIVE THAT IT PREVENTS INHABITANTS TO MAKE THEIR OWN SPACE.



SECTION 01

DRAWN AT :

ISO - 1/16" = 1' - 0"

SECTION - 1/2" = 1' - 0"

SECTION 01



SECTION 02



Katie Kim, Independent Senior Living at Athens' West Wing





THE FRAGMENTS AND THEIR HOMES







RIISING FROM THE RUINS?

Greystone hospital's rich, dark history may finally get a memorial

William Westhoven
Morristown Daily Record | USA TODAY NETWORK - NEW JERSEY

When the wrecking ball finally claimed the crumbling Greystone Park Psychiatric Hospital in 2015, many who mourned the loss of the enormous building in Parsippany were comforted that remnants of the historic structure had been preserved for a future memorial.

See GREYSTONE, Page 6A

Above: Greystone Park Psychiatric Hospital's majestic Kirkbride building, which dates back to 1876, is shown in 2015 as demolition crews continued to work reducing the historic Parsippany site to rubble.

NORTHJERSEY.COM FILE PHOTO



One of several rendered designs of a possible memorial for the Kirkbride building at Greystone Park Psychiatric Hospital in Parsippany, created by students at the Parsons School of Design. This rendering was produced by Parsons student Sandro Tahhan. PROVIDED BY ROBERT KIRKBRIDE

Murphy signs \$54B budget focused 'on families'

Katie Sobko
NorthJersey.com
USA TODAY NETWORK - NEW JERSEY

With just hours to spare, Gov. Phil Murphy signed a \$54.3 billion budget, which would go into effect on Saturday, for fiscal year 2024 on Friday.

The bill landed on Murphy's desk Friday afternoon after clearing both sides of the Legislature. Both chambers are controlled by Democrats but a handful of Republicans, six in the Assembly and two in the Senate, crossed party lines to support the bill.

"This budget focused on the pocketbooks of our families," Murphy said. "We all know that New Jersey is the best place in America to live and raise a family and we are ensuring with this budget that it stays that way."

See BUDGET, Page 7A

Why Louis Armstrong is as American as July 4

Queens center opens to honor musician

Jim Beckerman
NorthJersey.com
USA TODAY NETWORK - NEW JERSEY

"Born on the Fourth of July." Many have made that yankee doodle boast — including songwriter George M. Cohan (born July 3) and MGM chief Louis B. Mayer (born July 12).

But Louis Armstrong is a special case.

For one thing, he seems to have really believed it. As far as he knew, he was born July 4, 1900. "It's what his mother told him," said Armstrong biographer Ricky Riccardi.

See ARMSTRONG, Page 9A

Greystone

Continued from Page 1A.

Eight years later, that initiative is finally gaining momentum, with a relative of Greystone's 19th-century design taking a lead role, along with his students from the elite Parsons School of Design in New York.

During the past few years, many projects including this one were "shoved down," said Robert Duffy, a preservation expert and member of a grassroots group working on the Greystone memorial with the Morris County Park Commission.

Past forward to now and we are holding meetings regularly with the commission and other agencies to finalize the design of the memorial and start building it," he said.

The timeline is ambitious: Organizers don't have a final design or local approvals, but they hope to break ground in 18 to 24 months. But Duffy and others in the Greystone Park memorial group said Park Commission Chairman David Belner is helping to facilitate the project. Planners hope to complete work in time for the former building's 150th anniversary in 2026.

"During the next two years and until completion, we will be working hard," Duffy said. "This includes doing media events to raise awareness and momentum. There's even talk of doing a 'Greystone Day' on the site."

Greystone memorial designs unveiled

The design for the memorial, created by the Parsons students.

The students' instructor is Robert Kirkbride, a relative of physician Thomas Kirkbride, whose revolutionary approaches to treating mental health were incorporated into Greystone when it opened in 1876. Similar "Kirkbride Plan" facilities were built throughout the United States at the time.

"When I was asked to be involved in the design development of the memorial, I said 'absolutely.' That's very much part of my training and background as well as my teaching," said Kirkbride, a professor of architecture and product design.

At Parsons, he devoted an entire class semester to the adaptive reuse of Kirkbride buildings. As part of that study, Kirkbride tasked junior architectural design students to design memorials for Greystone and the Hudson River State Hospital in Poughkeepsie, New York.

The resulting proposals range from plantings that would outline the Parsippany building's massive footprint to erecting marble columns rescued from the building's iconic facade (the imposing structure has been featured in several TV shows and films). The columns would buttress a display space for the other preserved fragments of the hospital. Another design would display preserved elements below ground, beneath a transparent cover on which visitors could walk to view the relics.

"The way the students designed the memorials was remarkable," Kirkbride said. "There was pure joy in seeing these students get their heads around the significance of these buildings, with their difficult histories, and how to take these fragments and breathe new life into them to help remember and memorialize the patients, the practitioners, the nurses, the staff — everyone who invested themselves into trying to make these places healing places."

Part of a mental health revolution

Greystone was part of a national movement in the 19th century to improve treatment of the mentally ill by replacing the cramped and grim "mad asylums" of the past with more welcoming and spacious campuses. The five-story, 67,000-square-foot "Kirkbride building" at the center of the Greystone complex was believed to have the largest concrete foundation of any building in the country before the construction of the Pentagon in 1941.

In designing the Parsippany property, architect Samuel Sloan followed the Kirkbride Plan, which sought to treat patients not only through medical advice, but by the environment where they were kept.

The main building included 40 wards, split into separate wings for men and women.

Erected on a 743-acre campus in what is now Central Park of Morris County, Greystone became a self-sustaining community, with its own farms, a police force, a post office, a golf course and a train station.

"The students really understood the intertwining of the Kirkbride Plan," Robert Kirkbride said of his freeborn's vision. "My relative intended to knit together landscape and building, and



Demolition crews chip away at the Kirkbride building at Greystone Park Psychiatric Hospital in 2015.

PHOTO PROVIDED BY GREYSTONE/202



A long reach excavator knocks down an exterior wall of Greystone Park Psychiatric Hospital's Kirkbride building. Twelve Kirkbride buildings across the country have been rehabilitated or repurposed or are being renovated for community use, including former hospitals in Ohio, Alabama and South Carolina.

USA TODAY NETWORK - NEW JERSEY FILE PHOTO



Columns from the Kirkbride building's iconic facade and other elements were preserved. The final bricks came down in October 2015.

USA TODAY NETWORK - NEW JERSEY FILE PHOTO

those two aspects of being inside and outside were so important to the therapeutic experiences."

Almost a century later, the hospital was the setting for a historic 1960s moment in music history. Woody Guthrie famously spent several years at Greystone in the early 1960s as he struggled with Huntington's disease. A young Bob Dylan made a pilgrimage to the facility in 1961 to meet his musical hero there.

Guthrie's daughter, Nora, who used to visit her father at Greystone with her brother, Arlo, returned to Morris County in 2011 for a presentation about her father's story.

"I remember it very well," Nora Guthrie said. "The feeling of diving up to this city."

"Like it was another planet, occupied by people only in white, and patients."

Decline and destruction

In the latter half of the 20th century, overcrowding and a new emphasis on psychiatric drugs over institutionalization led to Greystone's decline. The state allowed buildings to deteriorate, and reports of patient abuse and escapes continued to surface. In the 90s, then Gov. Christine Todd Whitman or-

dered the site closed by 2003. It was replaced with a new Greystone Park Hospital that opened on the site in 2008.

Public protests, legal challenges and a series of formal expressions of interest by developers eager to repurpose the structure as too expensive or impractical. A \$34-million demolition began in late 2004.

The final bricks came down in October 2015. The 365 acres of the land cleared by the razing were annexed into the county park, now home to athletic fields and a dog run.

Robert Kirkbride, the Parsons professor, also is the spokesperson and founding trustee for Preservation Works, a national nonprofit advocating for the preservation and reuse of Kirkbride Plan hospitals. The Greystone Memorial Group is a satellite of that organization.

"There are about 36 [Kirkbride buildings] left in the United States and Canada out of over 75," he said. "And many of those 36 are actually at the brink."

Sixteen of the standing Kirkbrides are still in their original use, though very end are in "severe disrepair," including Trenton Psychiatric Hospital, Kirkbride

said. "I've been working over the past several years to really save what we lost at Greystone and to try to help other communities avoid that same calamity," he added.

Twelve Kirkbrides have been rehabilitated or repurposed or are being renovated for community use, including former hospitals in Ohio, Alabama and South Carolina. Two more are "currently vacant and at risk," Kirkbride said, one in Minnesota and another in Sydney, Australia.

"We've developed stigmas [regarding the historic treatment of the mentally ill] around the buildings, but the buildings need to be separated from the stigma," he said. "That's the lazy route out for politicians and developers, who hear grumbles and point them towards buildings rather than ourselves."

Pieces of history preserved

While the physical remembrance remains in the works, Greystone's legacy also has been documented in book form and an oral history project. Rusty Tagliarini, co-author with Christina Matthews of "Traces of America: Greystone Park Psychiatric Hospital," is part of the group working on the memorial project. Tagliarini and Matthews are also working on a "Greystone's Last Stand" documentary.

Tagliarini, Matthews, Duffy and Kirkbride worked together to convince the Greystone demolition contractors to preserve 80 pieces of the distinctive architectural elements from the Greystone facade, including 16 marble entry columns, decorative moldings and other ornamental details to be incorporated into the final design.

"They were very kind to show us some grace," Duffy said of the East Hanover-based Northstar Contracting Group. "They understood the importance of those artifacts."

For now, Greystone's remnants have been secured in an existing facility on the grounds, sheltered from the elements until they are needed, Duffy said.

Groundwater testing and additional site remediation work by the New Jersey Department of Environmental Protection must be completed before any memorial work can start. The state still needs the property before the main building.

A signed agreement dictates that the state does not have to pay for the county once the remediation is finished and the bonds that were issued to fund the demolition are paid off, which would be for several years, said Belner, the Park Commission chairman.

"We're very committed to continue acknowledging that building," he said. "There's going to be a day when there's nobody around that remembers what that campus looked like."

Belner added that his colleague Melanie Bump of the Park Commission is playing a key role in the memorial planning.

"It's all very preliminary," added Tagliarini. "But the people I've spoken with are very open to the Park Department. David Belner, I couldn't ask for a better person, because he is actually empathetic toward what the grounds are, and what they can represent going forward."

Email: westhoven@dailyrecord.com
Twitter: @westhoven

A detailed architectural floor plan of a large building complex, rendered in a light beige or gold color. The plan shows multiple interconnected wings, courtyards, and individual rooms, many of which are numbered. The layout is symmetrical, with a central horizontal corridor or wing. The plan is positioned behind the main title text.

PRESERVATIONWORKS

<http://thepreservationworks.org>